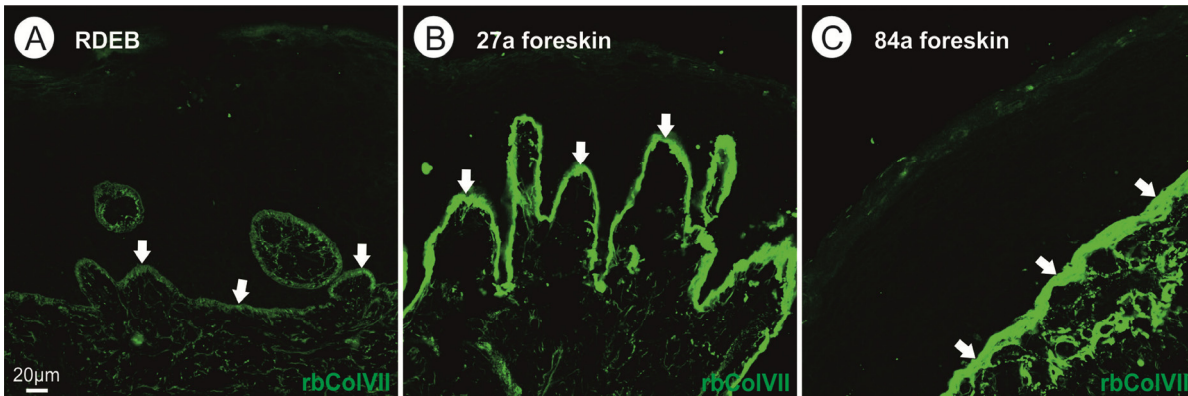


## SUPPLEMENTARY INFORMATION

Please browse the full text version of this manuscript to see the Supplementary Table.



**Supplementary Figure 1.** (A) Detection of type VII collagen protein with the rabbit polyclonal anti type VII collagen serum visualized a faint type VII collagen labeling at the epidermal-dermal junction (arrows) in RDEB patients compared to a strong immunoreactivity in (B) the middle aged and (C) aged skin tissue. Please compare this result with Fig. 2M and see discussion in text.