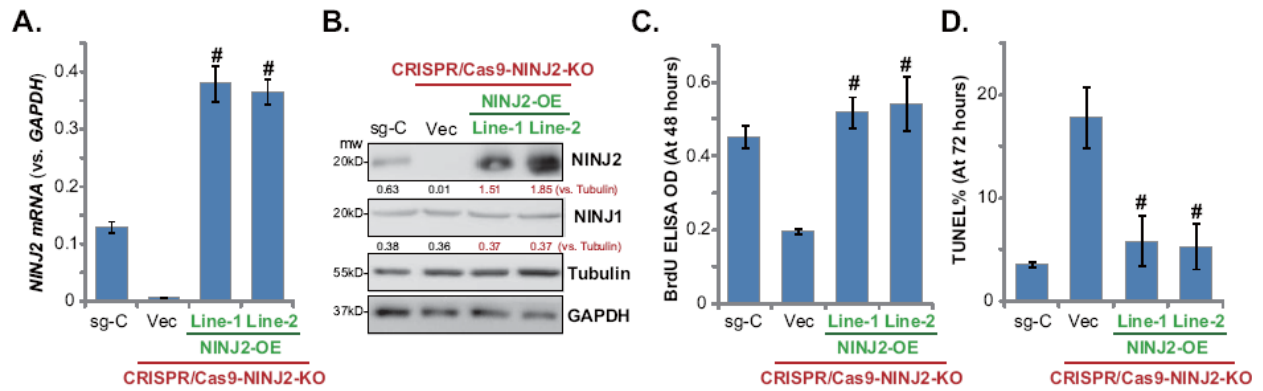


SUPPLEMENTARY FIGURE



**Supplementary Figure 1. Stable HT-29 cells with thelenti-CRISPR/Cas9-NINJ2-KO construct were further infected with lentivirus encoding *NINJ2* cDNA construct (“NINJ2-OE”) or empty vector, cultured in the selection medium with puromycin to achieve stable cell lines, “NINJ2-OE-Line-1/-2” and “Vec”. Cells were cultured for the indicated time periods; *NINJ2* mRNA and protein expression was tested by qPCR (A) and Western blotting (B) assays; Cell proliferation and apoptosis were tested by BrdU incorporation (C) and TUNEL staining (D) assays, respectively. “sg-C” stands for control cells with the non-sense control sgRNA. NINJ1 and NINJ2 protein expression was normalized to the loading control Tubulin (B). For each assay, n=5. <sup>#</sup>P< 0.05 vs. “Vec” cells (no rescue). Experiments in this figure were repeated three times, and similar results were obtained.**