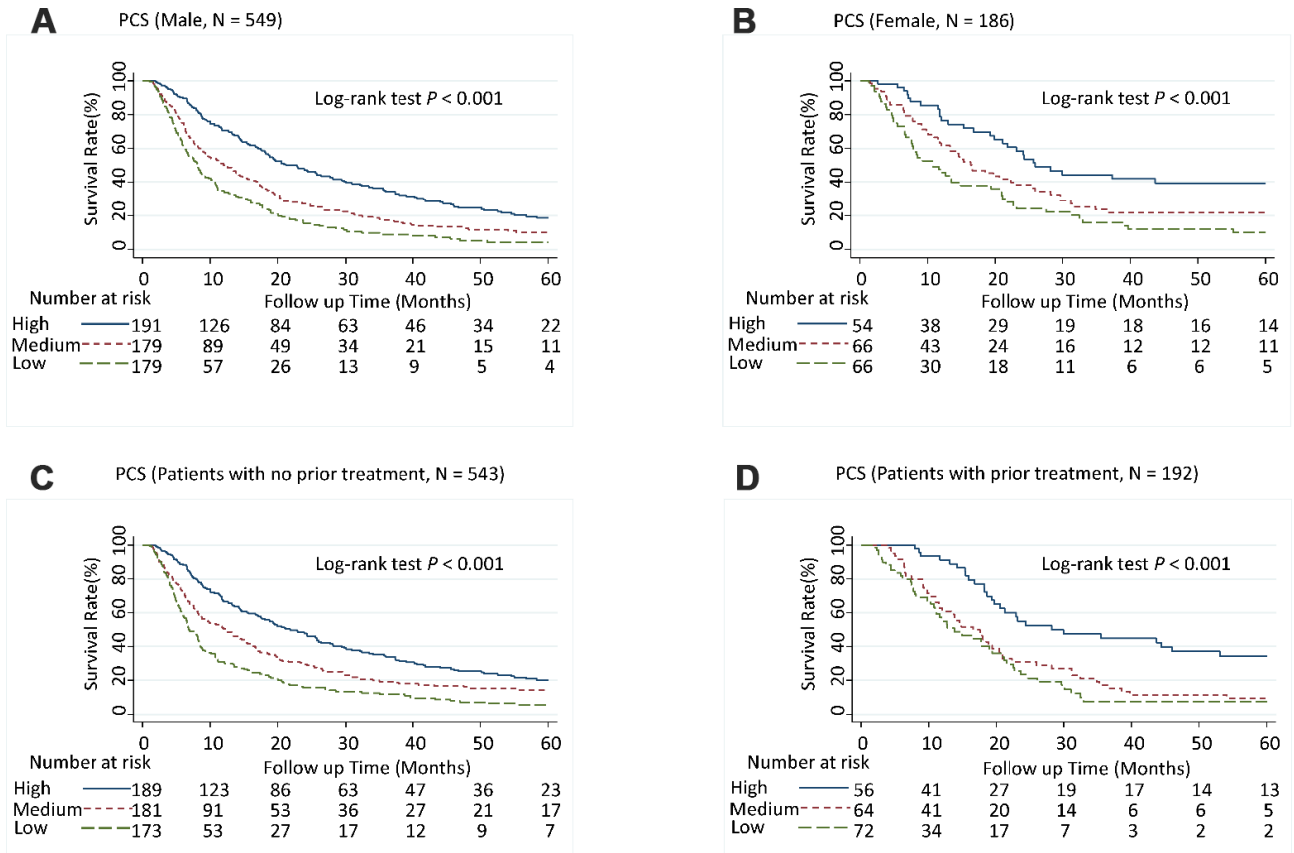
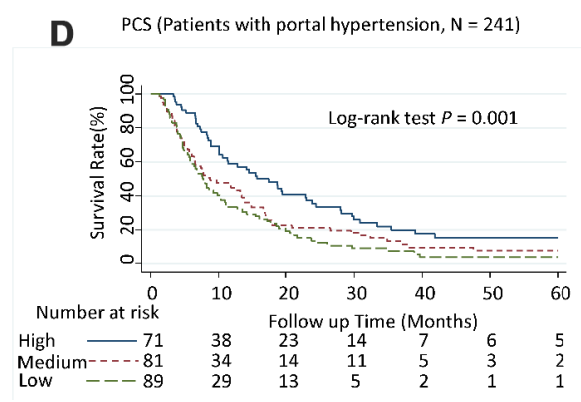
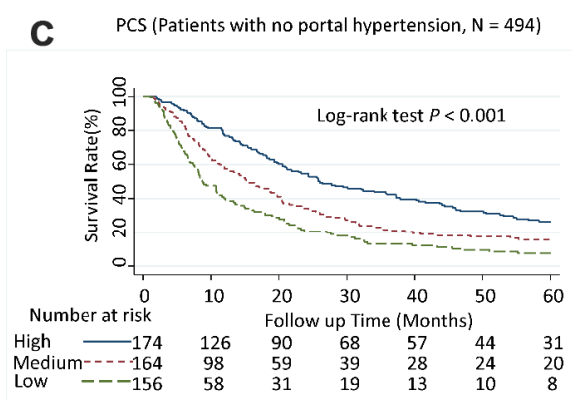
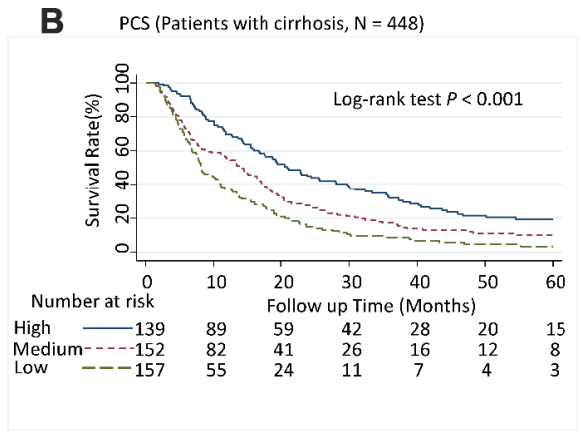
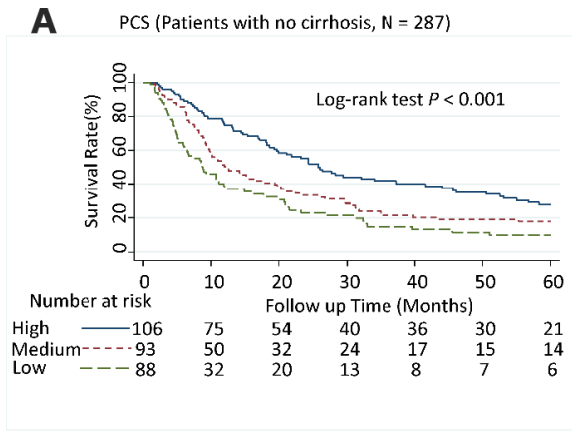


SUPPLEMENTARY FIGURES



Supplementary Figure 1. Five-year overall survival rates of hepatocellular carcinoma patients by Physical Component Summary (PCS) scores, stratified by sex and prior treatment history. (A) Male (N = 549), (B) Female (N = 186), (C) Patients with no prior treatment (N = 543), and (D) Patients with prior treatment (N = 192). PCS scores were categorized into tertiles; higher scores indicate a better physical quality of life. PCS: High, ≥ 45.0 ; Medium, $\geq 30.5, < 45.0$; Low, < 30.5 .



Supplementary Figure 2. Five-year overall survival rates of hepatocellular carcinoma patients by Physical Component Summary (PCS) scores, stratified by cirrhosis and portal hypertension history. (A) Patients with no cirrhosis (N = 287), (B) Patients with cirrhosis (N = 448), (C) Patients with no portal hypertension (N = 494), (D) Patients with portal hypertension (N = 241). PCS scores were categorized into tertiles; higher scores indicate a better physical quality of life. PCS: High, ≥ 45.0 ; Medium, $\geq 30.5, < 45.0$; Low, < 30.5 .