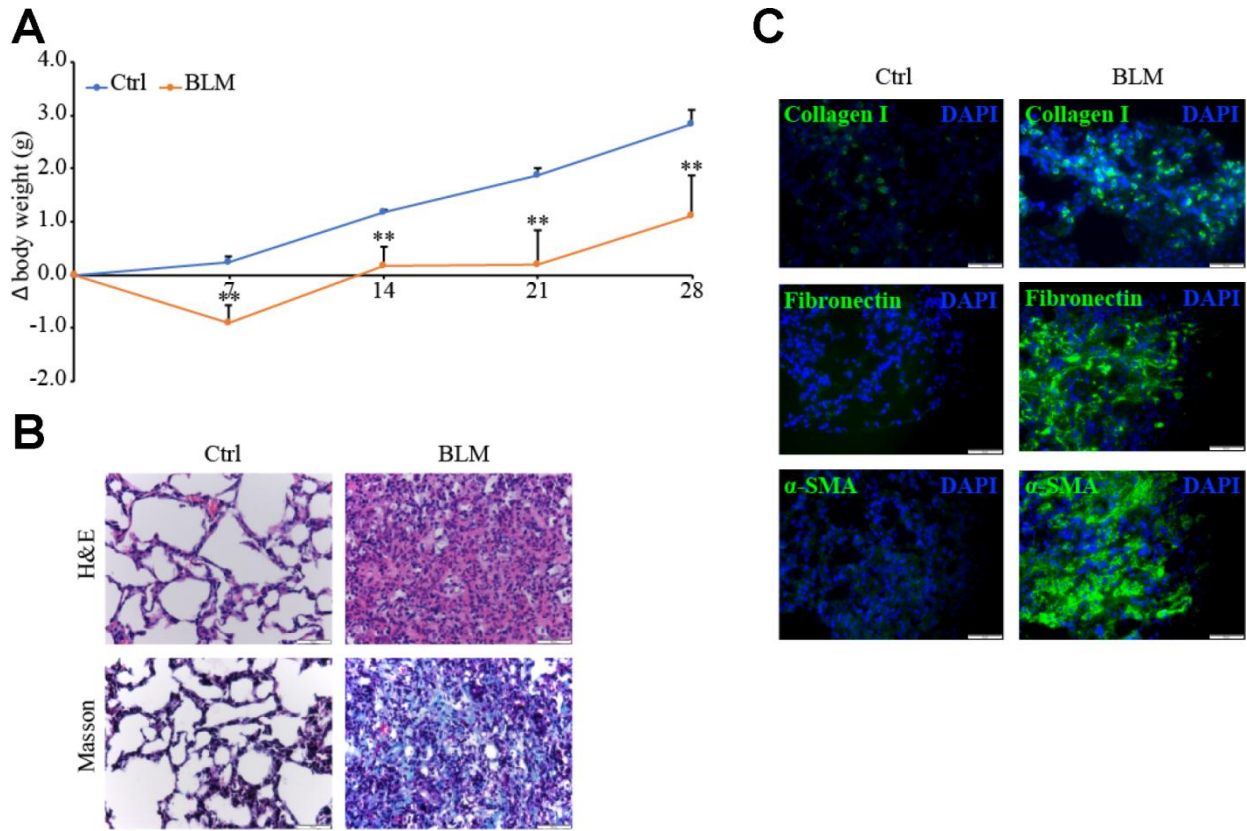


SUPPLEMENTARY FIGURE



Supplementary Figure 1. Validation of bleomycin induced pulmonary fibrosis in mice. Eight-week-old mice were intratracheally administered a single dose of PBS (Ctrl) or bleomycin (BLM). Body weight (BW) was monitored daily and is depicted as change in grams relative to baseline (0 day) (A). The lungs were harvested and subjected to H&E staining, Masson trichrome staining (B), and immunofluorescence staining of fibronectin, α -SMA, and collagen I (C). Scale bars = 50 μ m. ** $P < 0.01$ vs. Ctrl. 5-7 animals per group.