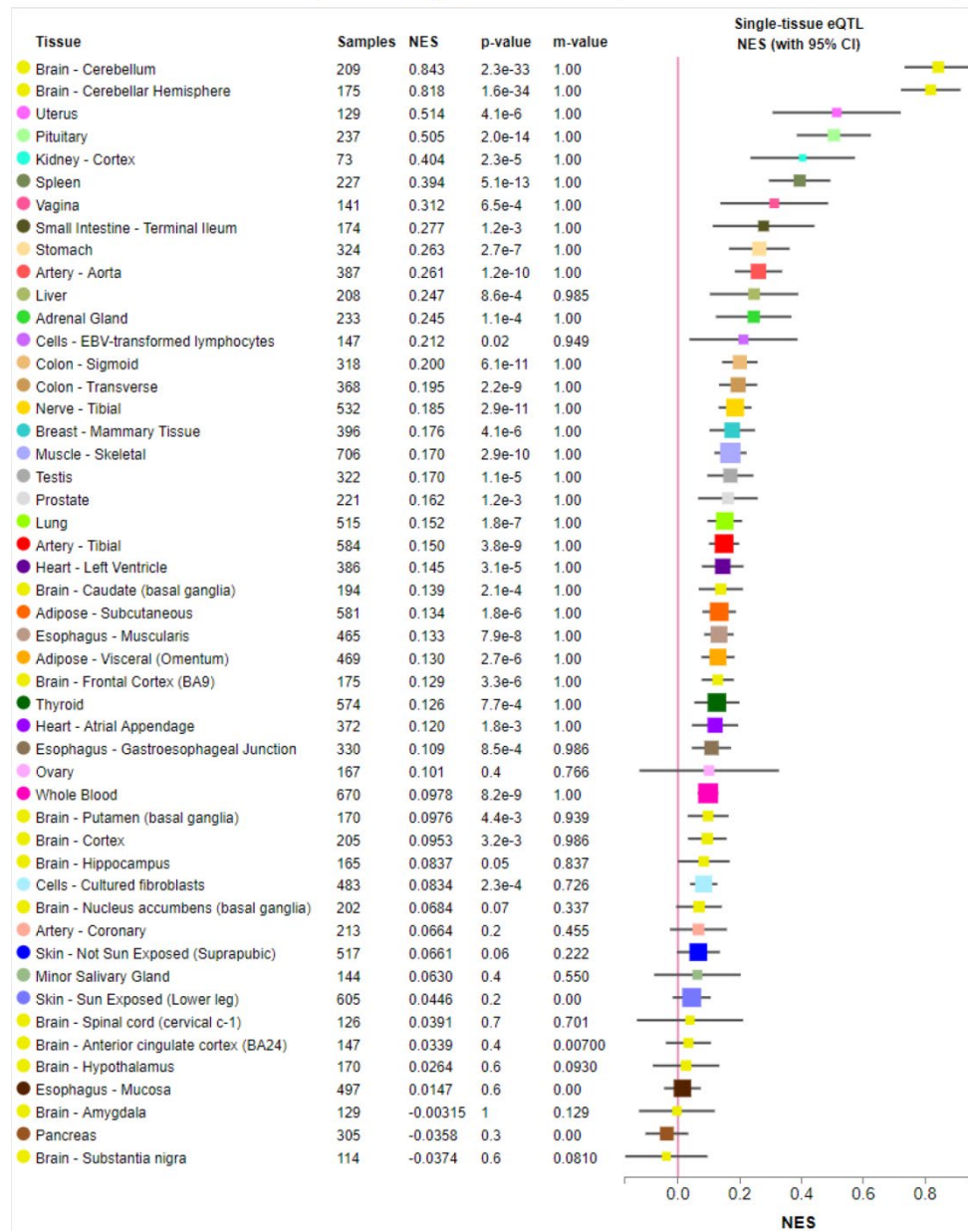


SUPPLEMENTARY FIGURES

Multi-tissue eQTL Comparison

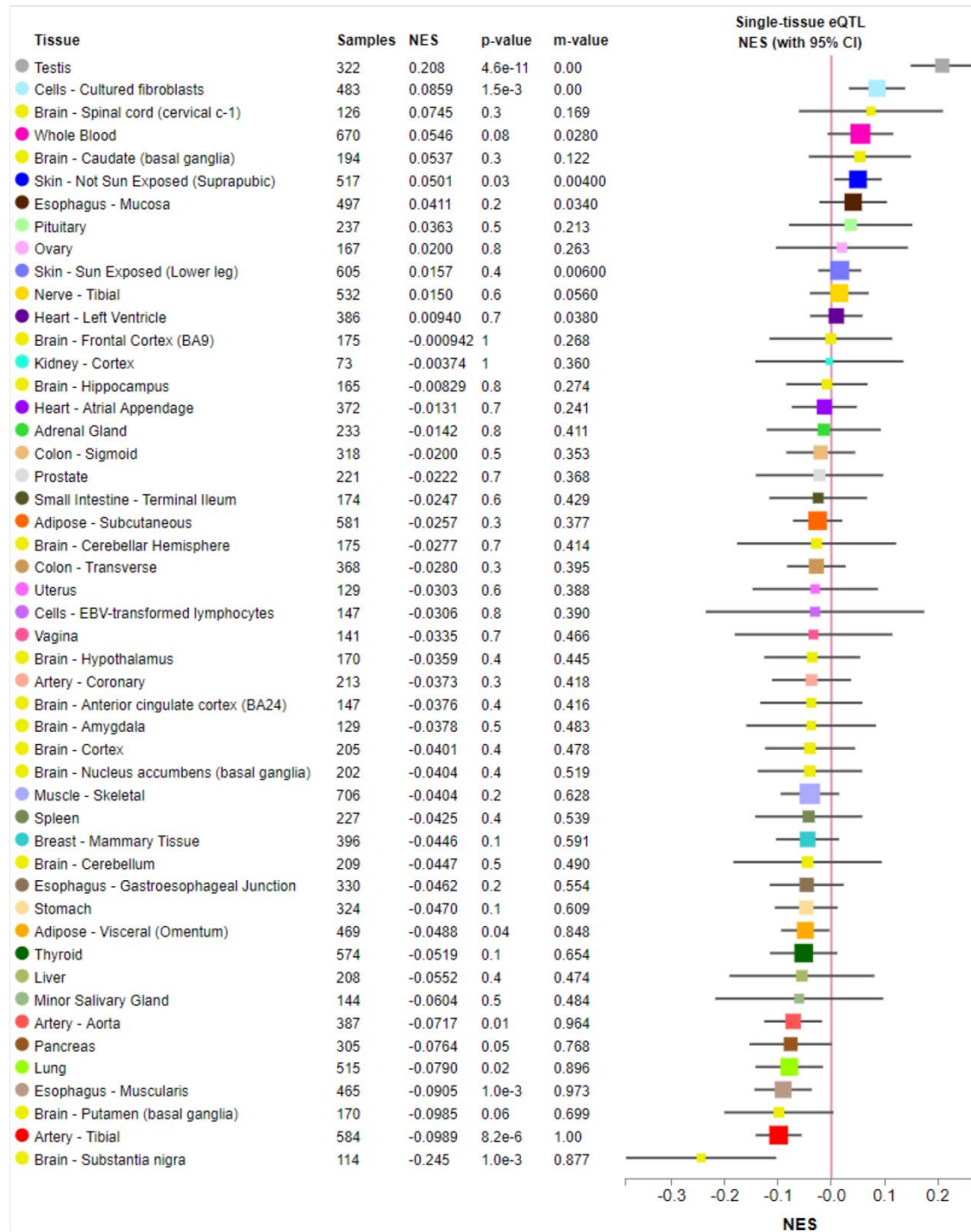
ENSG00000148700.14 ADD3 and chr10\_109975992\_C\_T\_b38 eQTL (Meta Analysis RE2 P-Value: 3.668709999999998e-253)



Supplementary Figure 1. Multi-tissue eQTL plot for rs17095355 on ADD3 expression. The plot was based on genotype and transcriptome data from the GTEx Analysis Release V8 (dbGaP Accession phs000424.v8.p2). The modeled allele is rs17095355 risk allele T.

## Multi-tissue eQTL Comparison

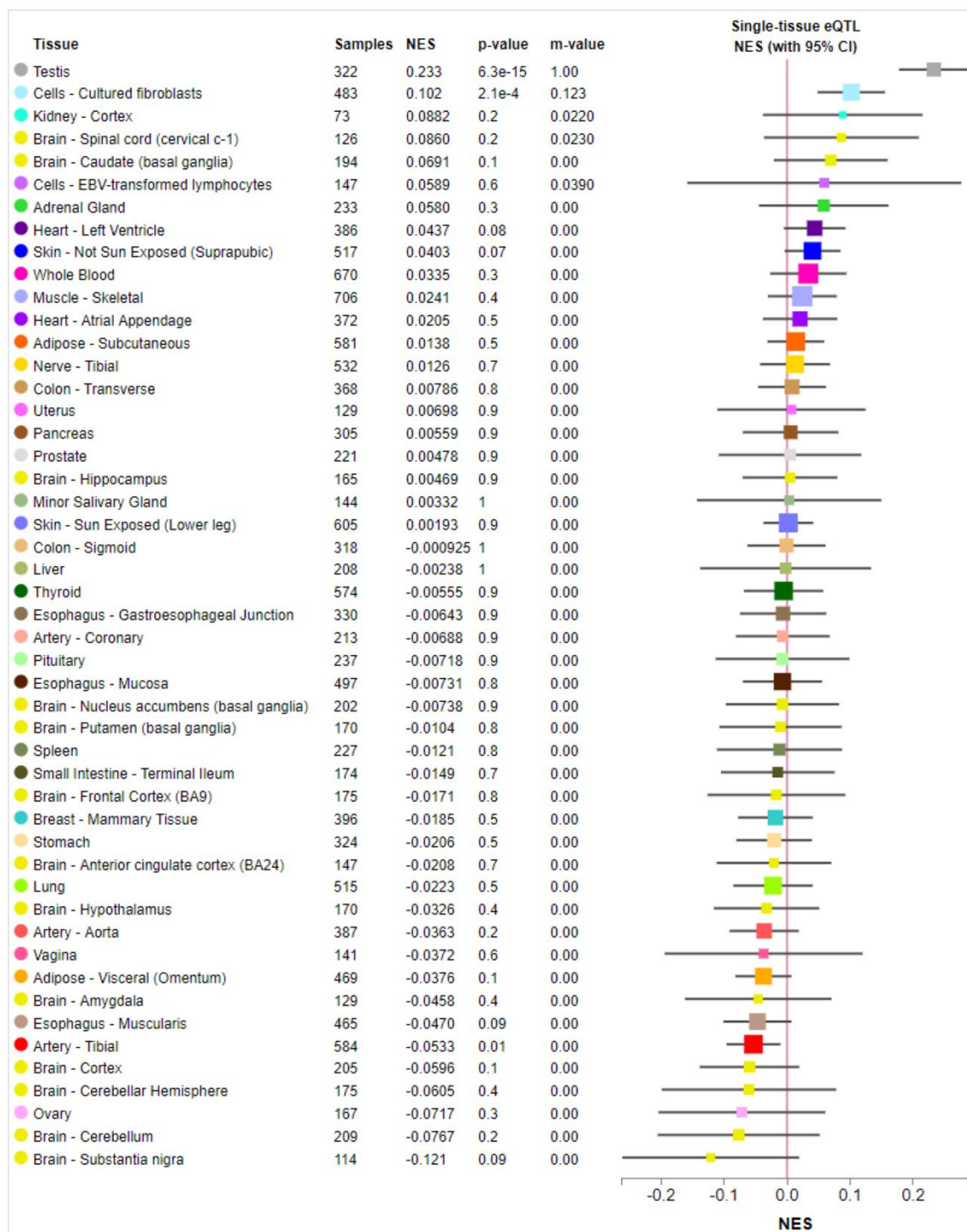
ENSG00000063660.8 GPC1 and chr2\_240431648\_T\_C\_b38 eQTL (Meta Analysis RE2 P-Value: 5.589559999999999e-16)



**Supplementary Figure 2. Multi-tissue eQTL plot for rs6707262 on GPC1 expression.** The plot was based on genotype and transcriptome data from the GTEx Analysis Release V8 (dbGaP Accession phs000424.v8.p2). The modeled allele is rs6707262 risk allele G.

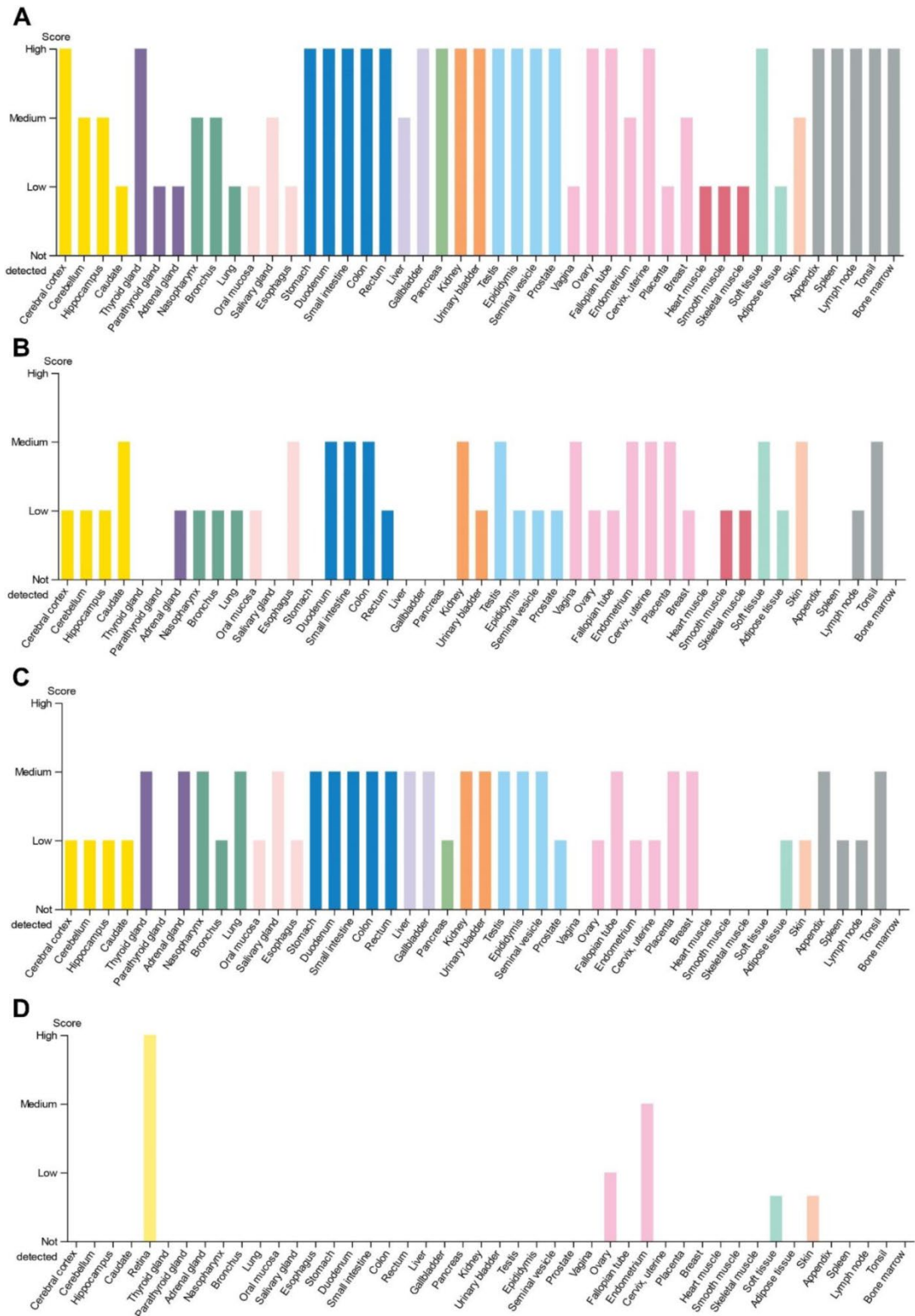
## Multi-tissue eQTL Comparison

ENSG00000063660.8 GPC1 and chr2\_240423252\_T\_C\_b38 eQTL (Meta Analysis RE2 P-Value: 2.61716e-10)

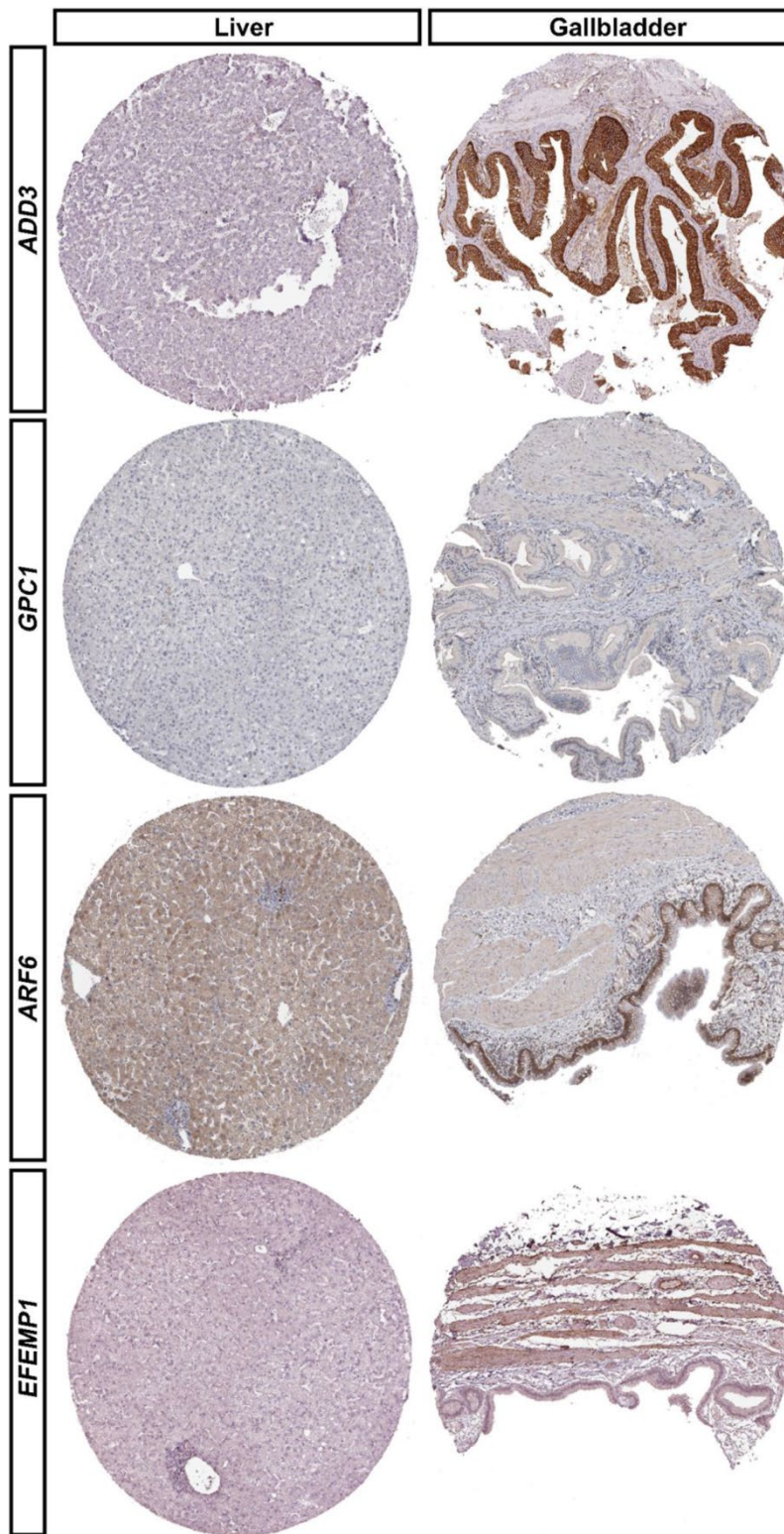


**Supplementary Figure 3. Multi-tissue eQTL plot for rs6750380 on GPC1 expression.** The plot was based on genotype and transcriptome data from the GTEx Analysis Release V8 (dbGaP Accession phs000424.v8.p2). The modeled allele is rs6750380 risk allele G.





**Supplementary Figure 4. The expression of *ADD3*, *GPC1*, *ARF6* and *EFEMP1* in human tissues.** (A–D) stand for *ADD3*, *GPC1*, *ARF6* and *EFEMP1* expression respectively in human tissues from THE HUMAN PROTEIN ATLAS (<https://www.proteinatlas.org/>). The vertical axis indicates the expression level of the gene in each tissue.



Supplementary Figure 5. Immunohistochemistry analysis of *ADD3*, *GPC1*, *ARF6* and *EFEMP1* in adult human liver and gallbladder tissues from THE HUMAN PROTEIN ATLAS database (<https://www.proteinatlas.org/>).