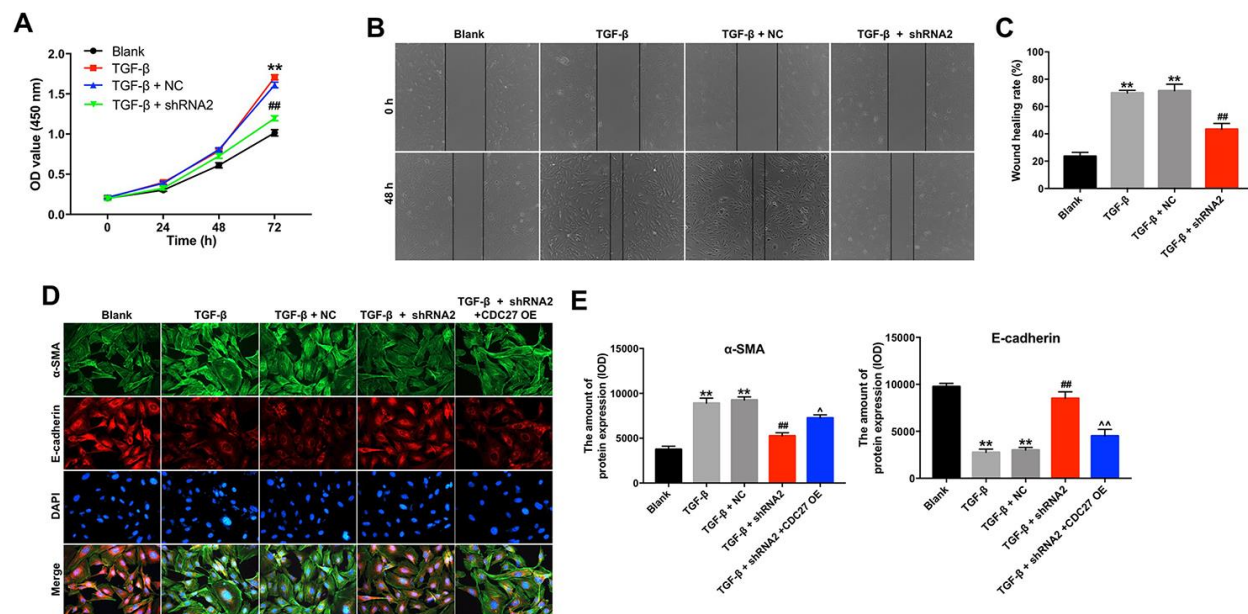


## SUPPLEMENTARY FIGURE



**Supplementary Figure 1. Hsa\_circ\_0044226 knockdown suppresses TGF-β1-induced EMT in BEAS-2B cells by downregulating CDC27.** (A) BEAS-2B cells were pretreated with 10 ng/mL TGF-β1 for 48 h and then transfected with hsa\_circ\_0044226 shRNA2 for 0, 24, 48 or 72 h. CCK-8 assays were applied to determine the cell viability. (B, C) Cell migration was detected using wound healing assays. (D, E) EMT was assessed based on relative fluorescence of E-cadherin, α-SMA and DAPI staining determined using IHC. \*\*P < 0.01 vs. Blank group. ###P < 0.01 vs. TGF-β1 group. ^P < 0.05, ^^P < 0.01 vs. TGF-β1 + shRNA2 group.