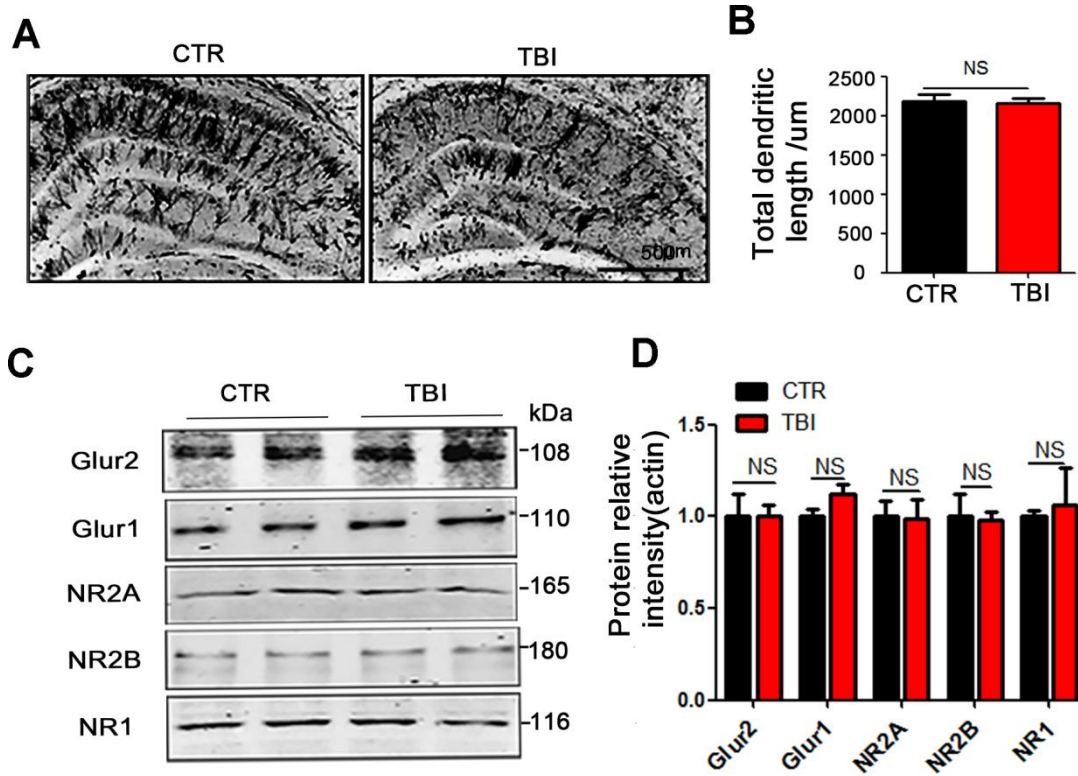
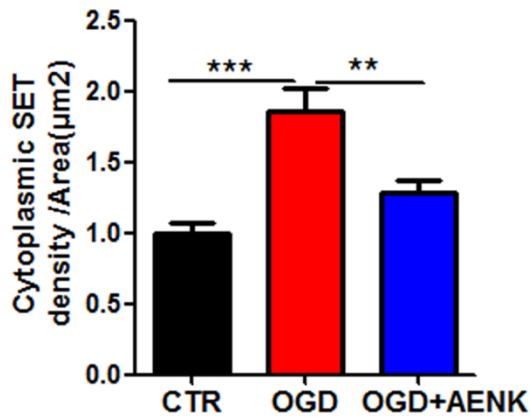


**SUPPLEMENTARY FIGURES**



**Supplementary Figure 1. Traumatic brain injury led to synaptic dysfunction.** (A) Representative dendritic spines of neurons from Golgi impregnated hippocampus. Scale bar = 500  $\mu$ m. (B) Total dendritic length. (C, D) Brain tissues from hippocampus were homogenized, and synaptic protein levels were detected by immunoblotting, n=3. *p* value significance is calculated from a one-way ANOVA, all data represent mean  $\pm$  SEM.



**Supplementary Figure 2. OGD caused SET cytoplasmic detention.** Quantitative analysis of the immunofluorescence staining showed the cytoplasmic SET density significantly increased by OGD processing. n=30 cells. *p* value significance is calculated from a two-way ANOVA, all data represent mean  $\pm$  SEM, \*\**p* < 0.01, \*\*\**p* < 0.001 vs OGD group.