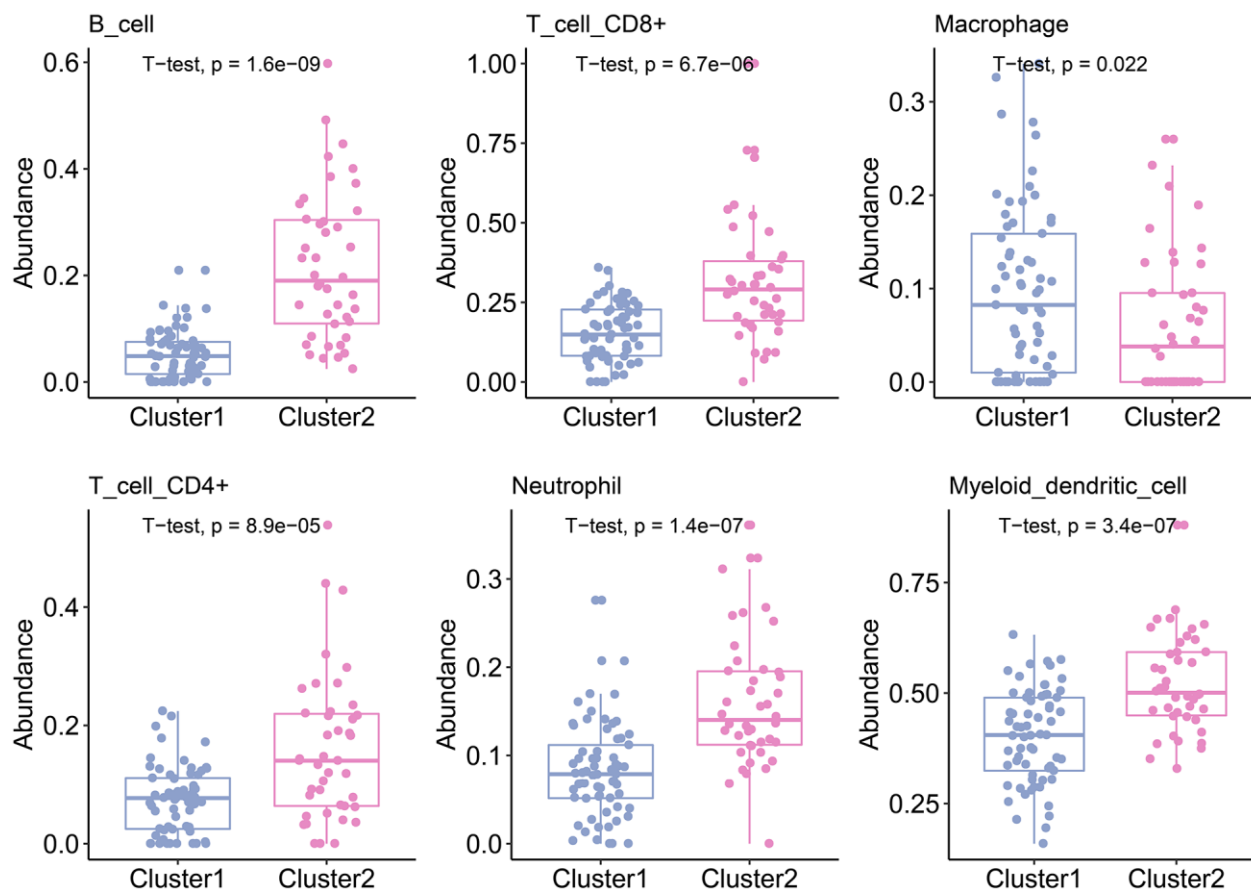
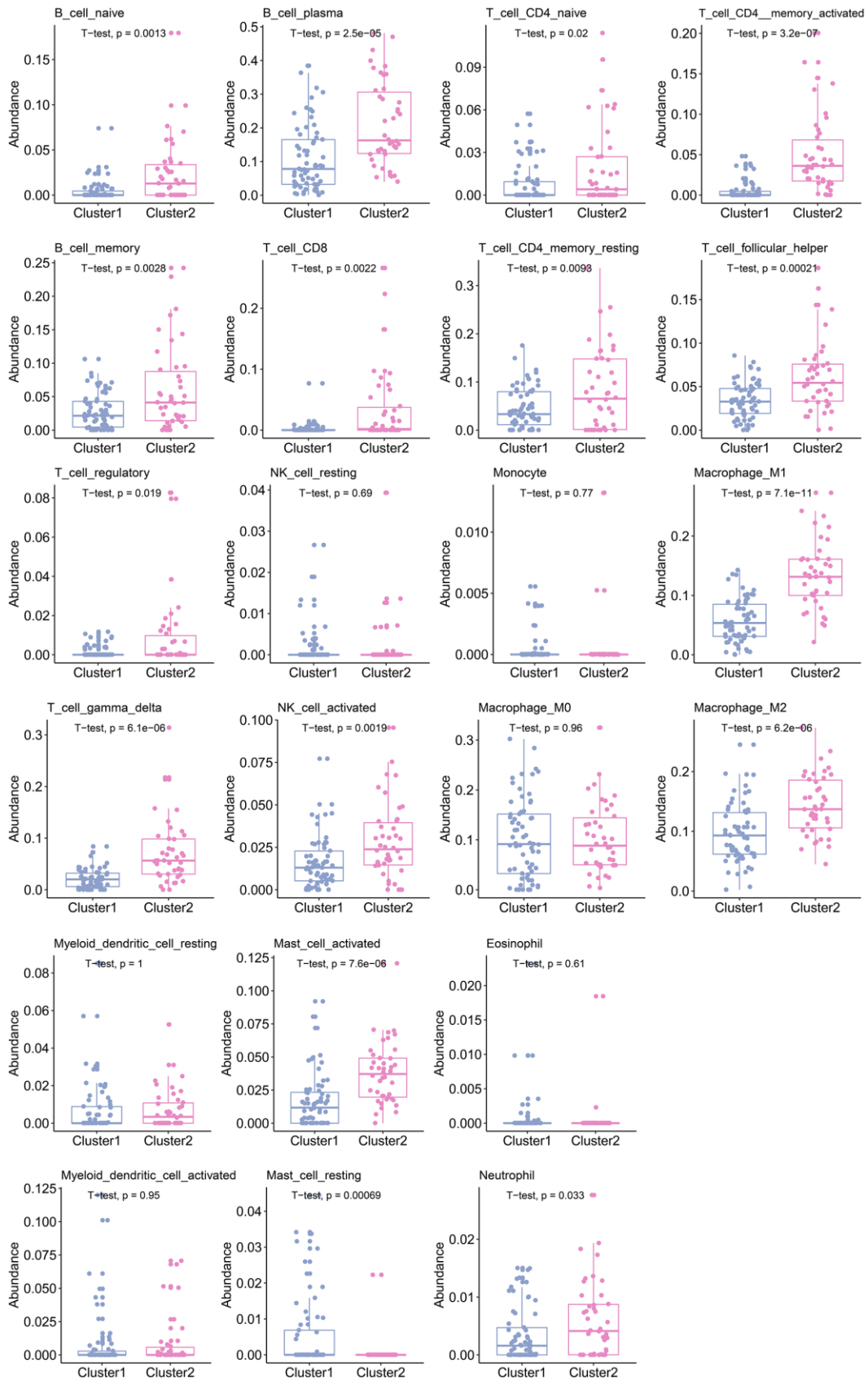


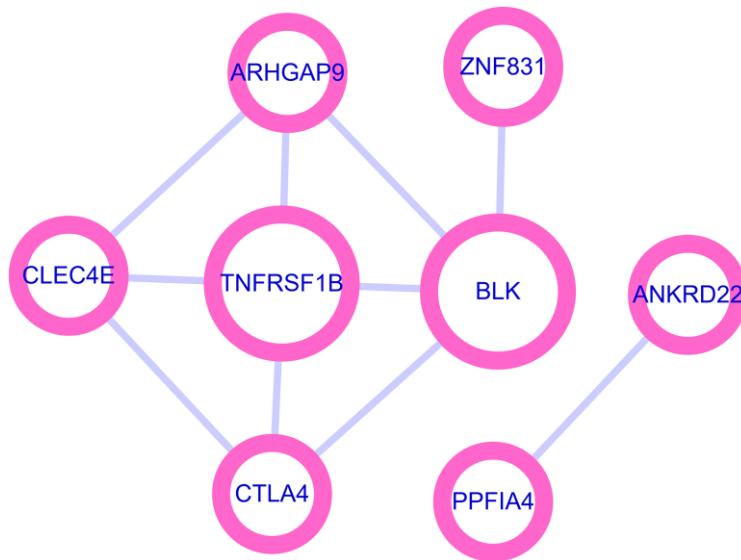
## SUPPLEMENTARY FIGURES



**Supplementary Figure 1. The abundance of tumor infiltrating immune cells in the Cluster 1 and 2 estimated by TIMER2.0.**  
TIMER2.0 estimated 6 kinds of tumor infiltrating immune cells.



**Supplementary Figure 2. The abundance of tumor infiltrating immune cells in the Cluster1 and 2 estimated by CIBERSORTx.** CIBERSORTx estimated 22 kinds of tumor infiltrating immune cells.



**Supplementary Figure 3. Protein-protein interaction network of 8 genes in the TME signature.** TNFRSF1B and BLK with the most neighbor genes were identified as hub genes.