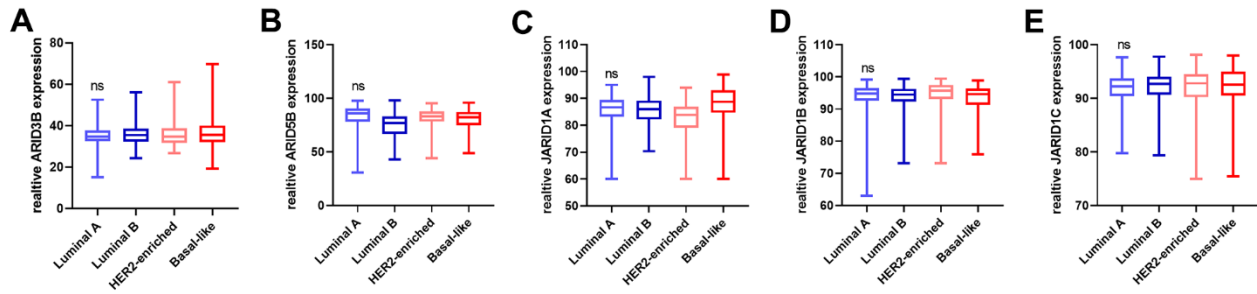
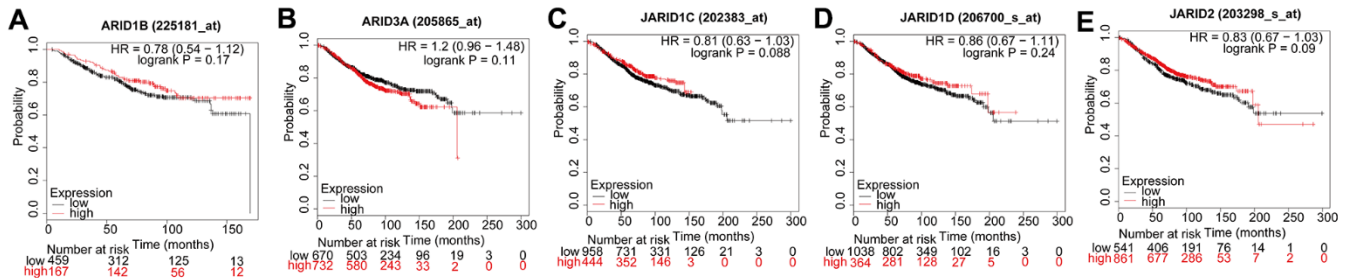


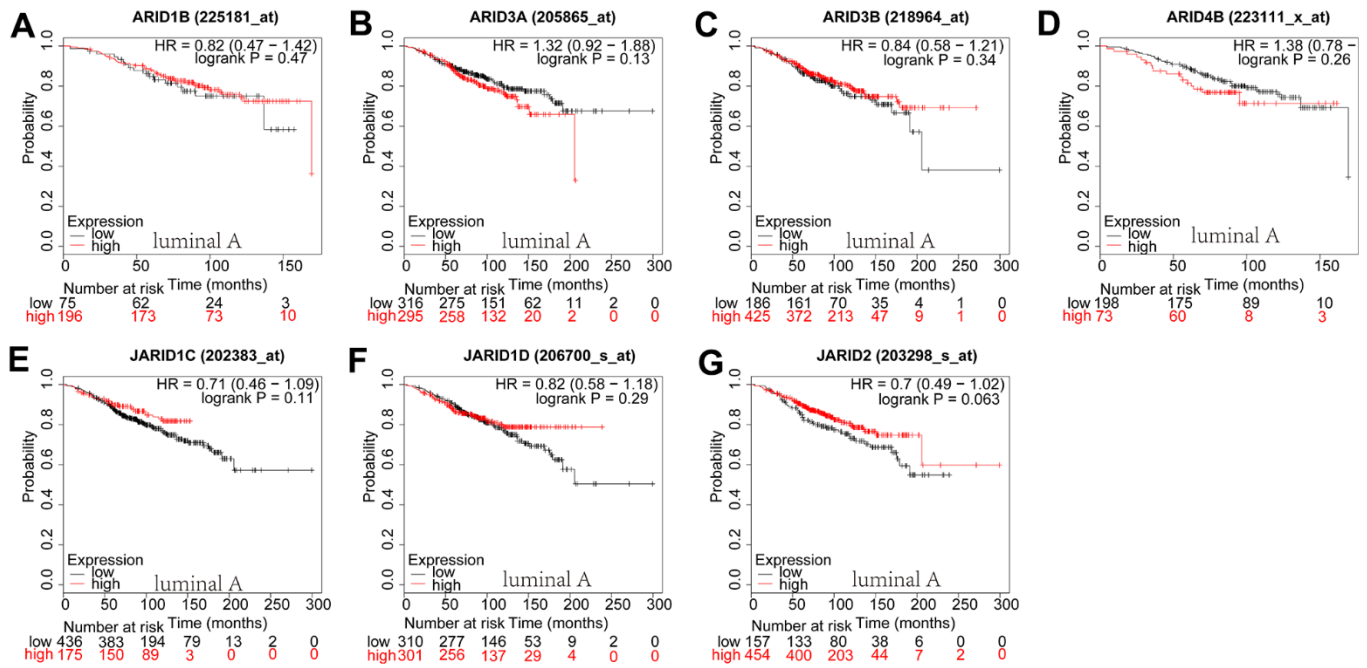
**SUPPLEMENTARY FIGURES**



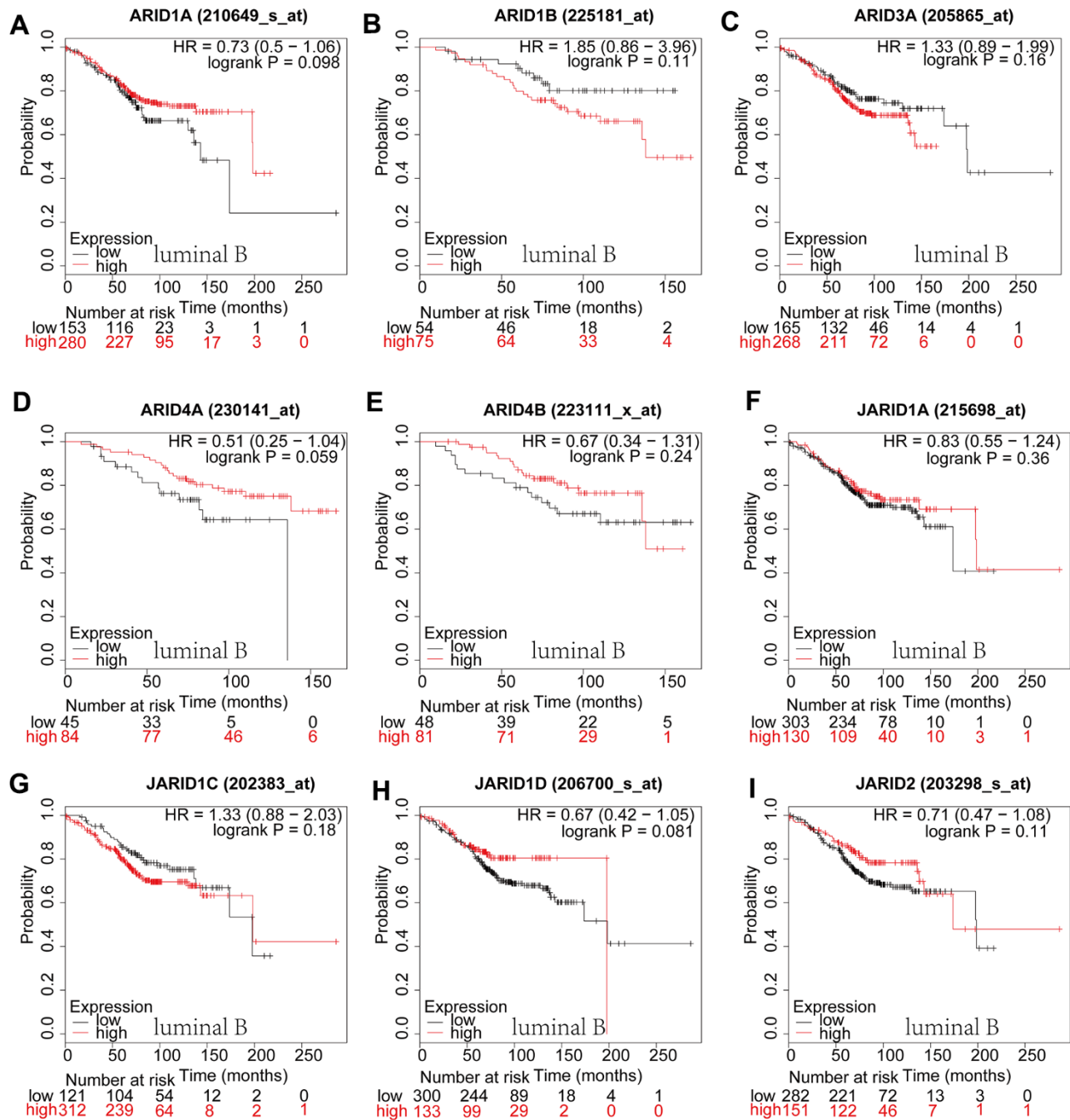
**Supplementary Figure 1. Distinct expression of ARID members in different breast cancer molecular subtypes.** (A–E) The mRNA expression of ARID3B, ARID5B, JARID1A, JARID1B, JARID1C were assessed in different molecular subtypes (p values were calculated grouping by luminal A + luminal B VS. HER2-riched + basal-like and using t-test).



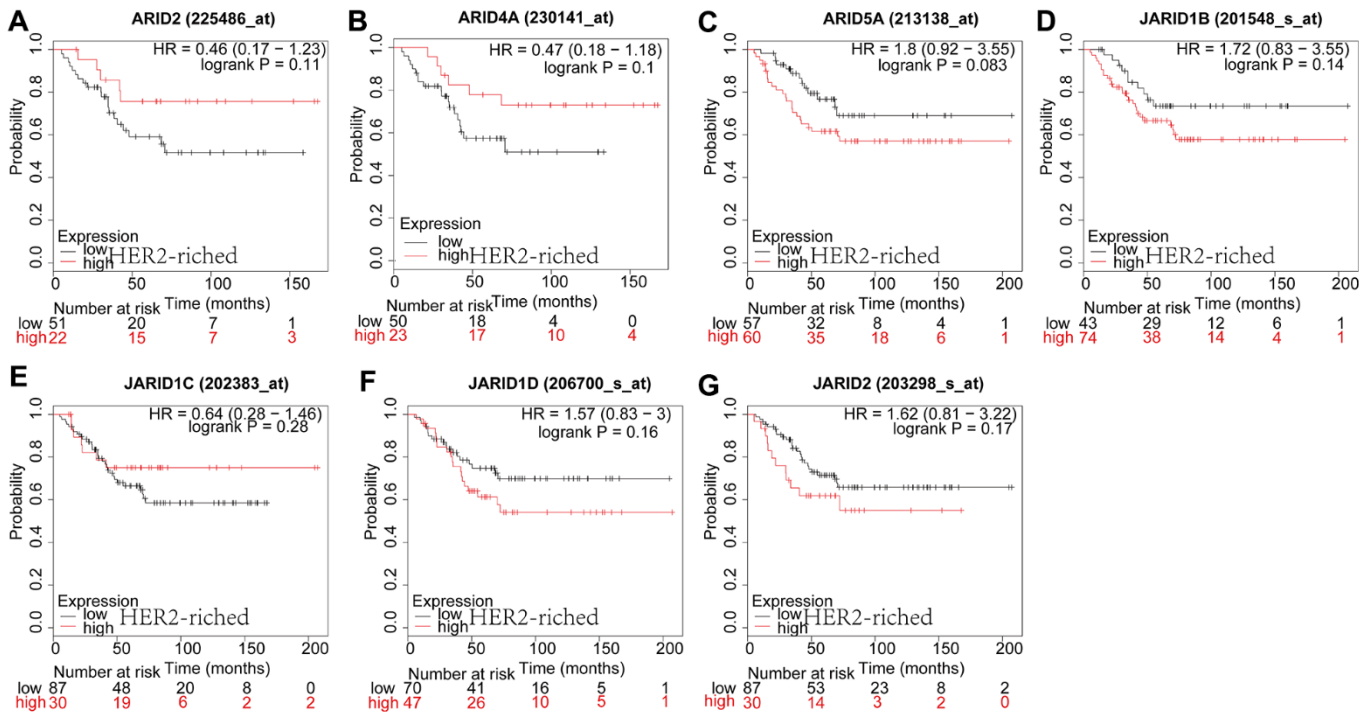
**Supplementary Figure 2. Prognostic values of ARID members in all breast cancer patients.** (A–E) Survival curves of ARID1B(Affymetrix IDs: 225181\_at), ARID3A(Affymetrix IDs: 205865\_at), JARID1C(Affymetrix IDs: 202383\_at), JARID1D(Affymetrix IDs: 206700\_s\_at), JARID2(Affymetrix IDs: 203298\_s\_at).



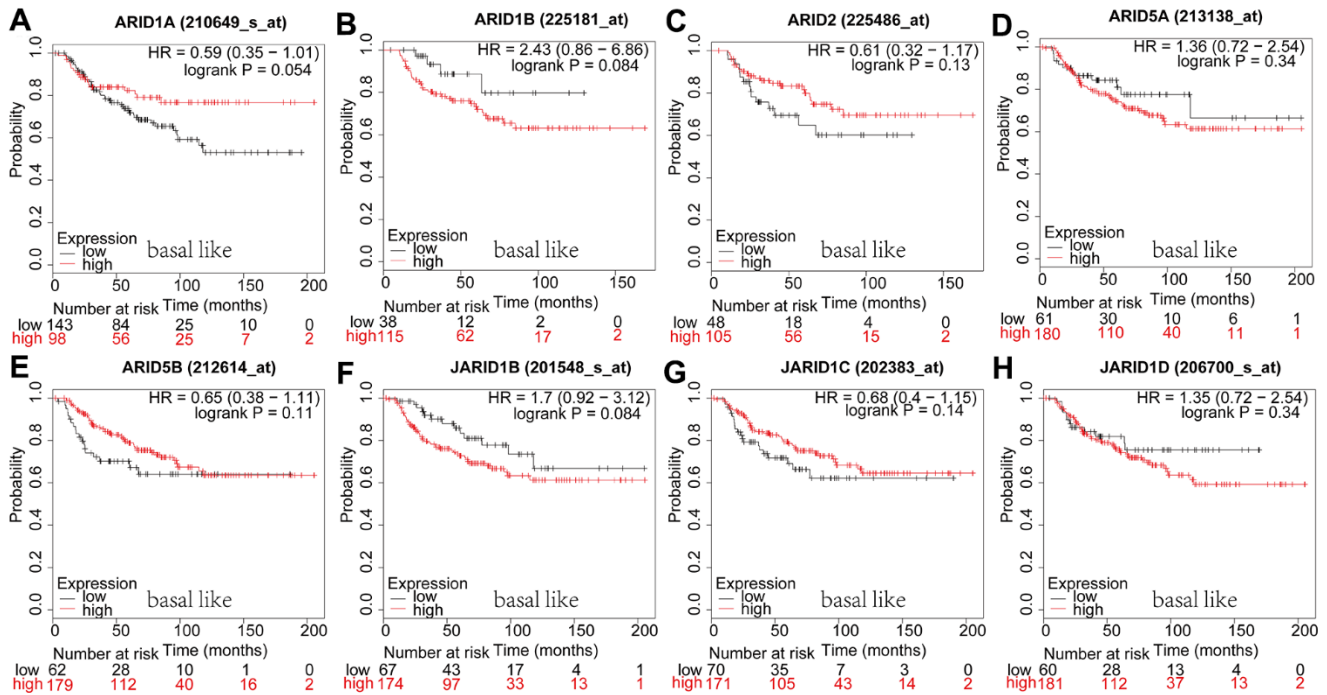
**Supplementary Figure 3. Prognostic values of ARID members in luminal A type breast cancer patients. (A–G)** Survival curves of ARID1B(Affymetrix IDs: 225181\_at), ARID3A(Affymetrix IDs: 205865\_at), ARID3B(Affymetrix IDs: 218964\_at), ARID4B(Affymetrix IDs: 223111\_x\_at), JARID1C(Affymetrix IDs: 202383\_at), JARID1D(Affymetrix IDs: 206700\_s\_at), JARID2(Affymetrix IDs: 203298\_s\_at).



**Supplementary Figure 4. Prognostic values of ARID members in luminal B type breast cancer patients.** (A-I) Survival curves of ARID1A(Affymetrix IDs: 210649\_s\_at), ARID1B(Affymetrix IDs: 225181\_at), ARID3A(Affymetrix IDs: 205865\_at), ARID4A(Affymetrix IDs: 230141\_at), ARID4B(Affymetrix IDs: 223111\_x\_at), JARID1A(Affymetrix IDs: 215698\_at), JARID1C(Affymetrix IDs: 202383\_at), JARID1D(Affymetrix IDs: 206700\_s\_at), JARID2(Affymetrix IDs: 203298\_s\_at).



**Supplementary Figure 5. Prognostic values of ARID members in HER2-rich type breast cancer patients. (A–G)** Survival curves of ARID2(Affymetrix IDs: 225486\_at), ARID4A(Affymetrix IDs: 230141\_at), ARID5A(Affymetrix IDs: 213138\_at), JARID1B(Affymetrix IDs: 201548\_s\_at), JARID1C(Affymetrix IDs: 202383\_at), JARID1D(Affymetrix IDs: 206700\_s\_at), JARID2(Affymetrix IDs: 203298\_s\_at).



**Supplementary Figure 6. Prognostic values of ARID members in basal-like type breast cancer patients. (A–H)** Survival curves of ARID1A(Affymetrix IDs: 210649\_s\_at), ARID1B(Affymetrix IDs: 225181\_at), ARID2(Affymetrix IDs: 225486\_at), ARID5A(Affymetrix IDs: 213138\_at), ARID5B(Affymetrix IDs: 212614\_at), JARID1B(Affymetrix IDs: 201548\_s\_at), JARID1C(Affymetrix IDs: 202383\_at), JARID1D(Affymetrix IDs: 206700\_s\_at).