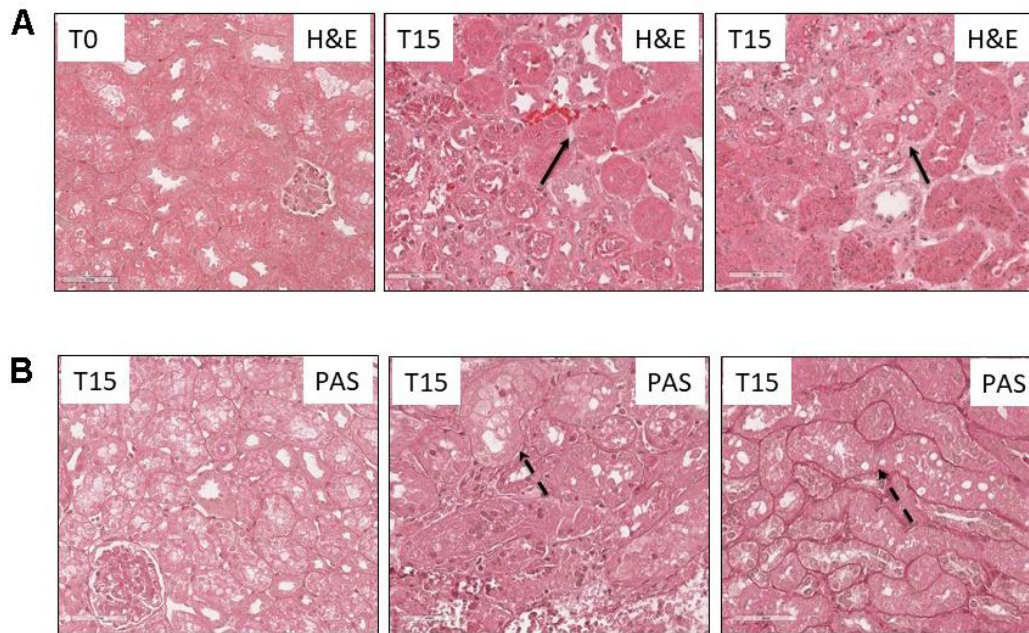


SUPPLEMENTARY FIGURE



Supplementary Figure 1. Modulation of early tubulointerstitial damage in a swine model of I/R injury. Compared with basal conditions, 30 min of warm ischemia followed by 15 min of reperfusion induced capillary congestion (A, black arrows, H&E staining) and focal vacuolization at the tubulointerstitial level (B, dotted arrows, periodic acid-Schiff (PAS) staining). Magnification 20X.