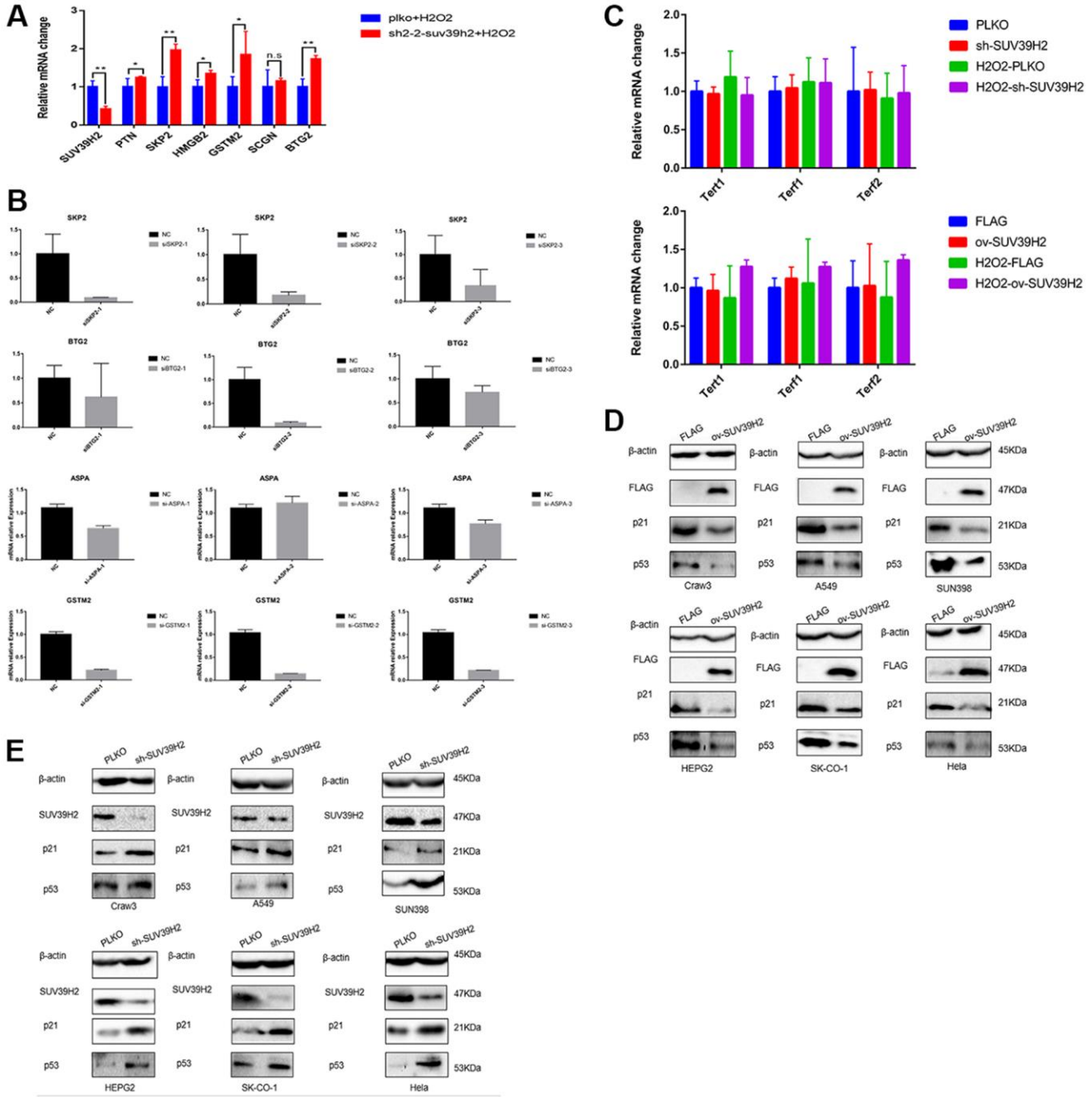


SUPPLEMENTARY FIGURE



Supplementary Figure 1. (A) Another shRNA (sh2-2-SUV39H2) was used to examine the result of RNA-seq through. (B) qPCR was used to evaluate knockdown efficiency in three parallel siRNA (SKP2/BTG2/GSTM2/ASPA). (C) PLKO-H9C2, sh-SUV39H2-H9C2, FLAG-H9C2 and ov-SUV39H2-H9C2 cell lines were added with or without 50 μ M H₂O₂ for 48 hours, and telomerase activity was detected by qPCR using telomerase associated genes (Tert1, Terf1, Terf2). (D–E) HEPG2 (Human Hepatic cells), A549 (Human lung adenocarcinoma cells), SNU398 (Human Hepatic cells), SK-CO-1 (Human colorectal adenocarcinoma cells) and HeLa (Human Cervical cancer cells) were transfected with control, lenti-sh-SUV39H2 and lenti-ov-SUV39H2 in 50 μ M H₂O₂. Western blotting for p21 and p53 in mentioned above groups were performed. All the experiments have been repeated independently at least 3 times. * $P < 0.05$, ** $P < 0.01$, *** $P < 0.005$ when two groups were compared as indicated, or were compared to the corresponding control.