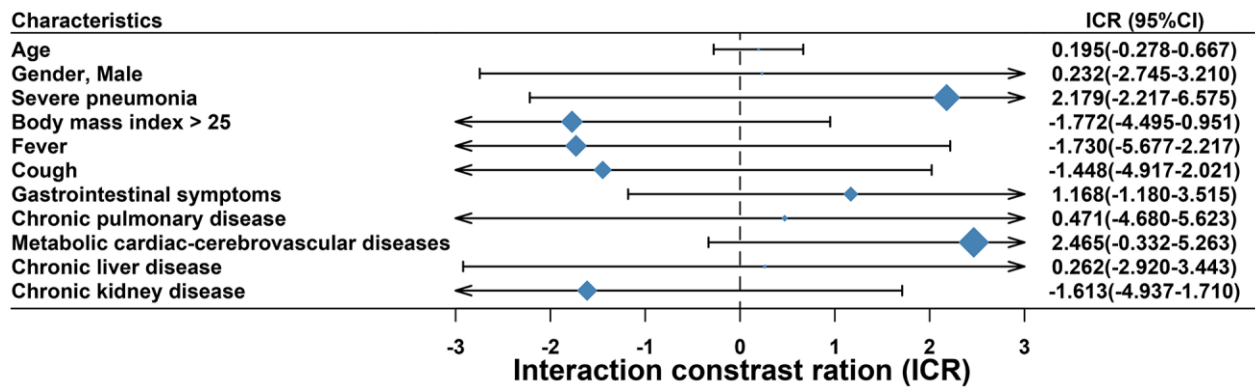
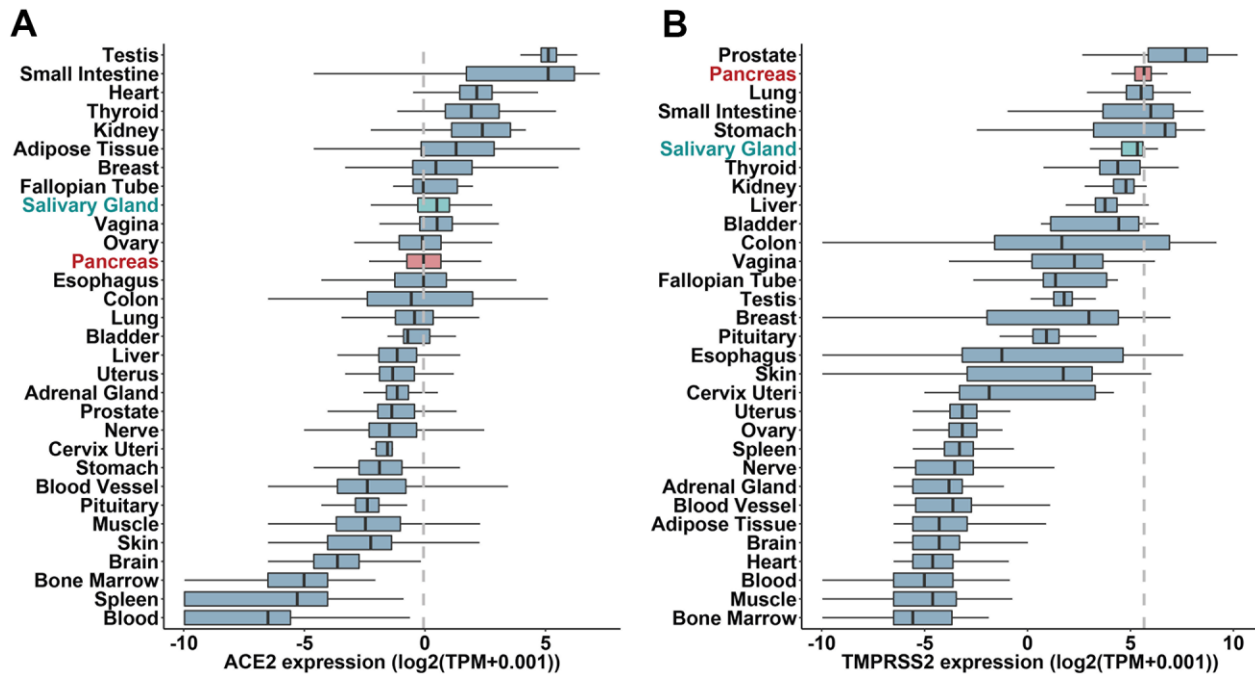


SUPPLEMENTARY FIGURES



Supplementary Figure 1. Interaction contrast ratios (ICR) were calculated to assess the additive interaction between serum amylase and common clinical characteristics in the Cox regression.



Supplementary Figure 2. The mRNA expression of *ACE2* (A) and *TMPRSS2* (B) in 31 normal human tissues from GTEx.