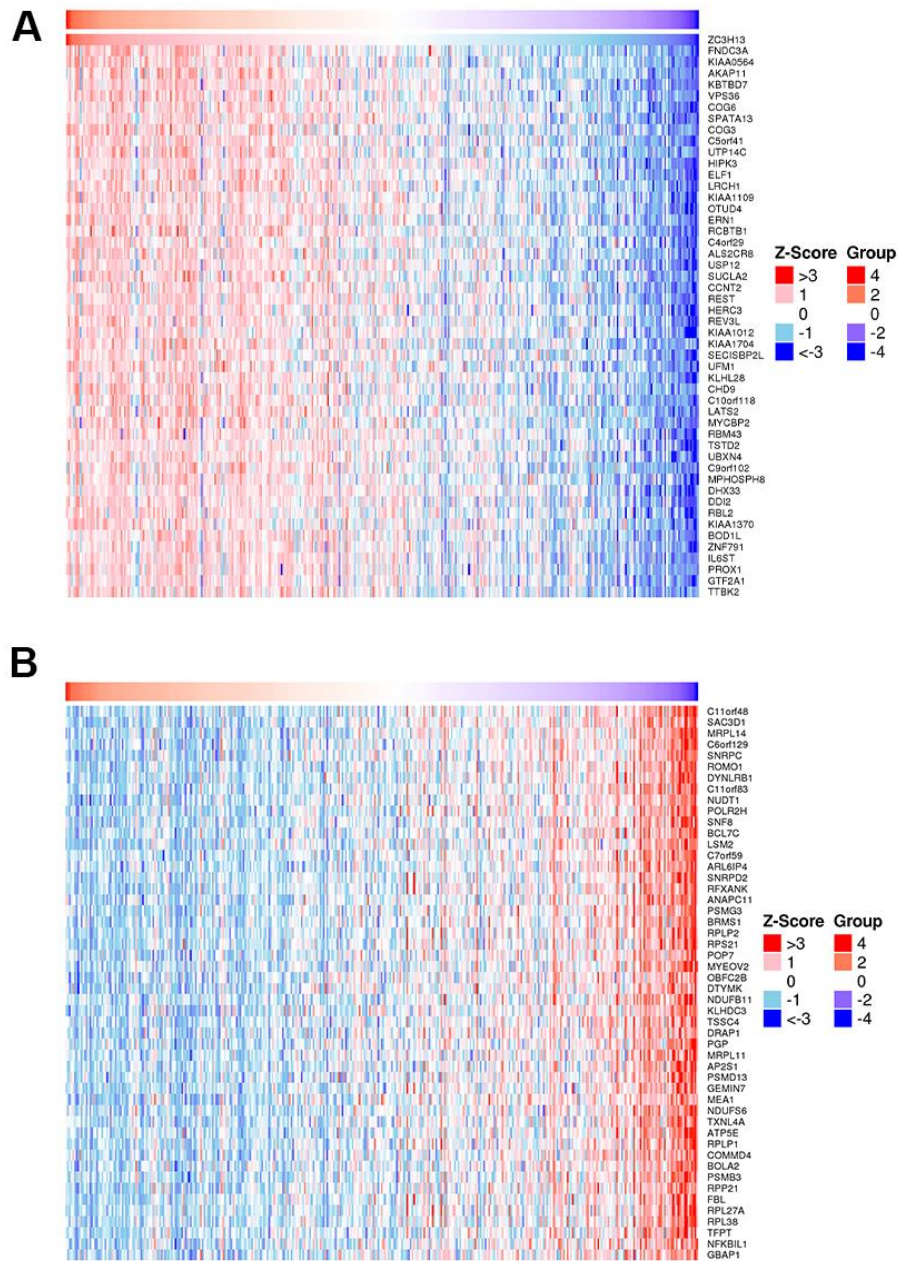
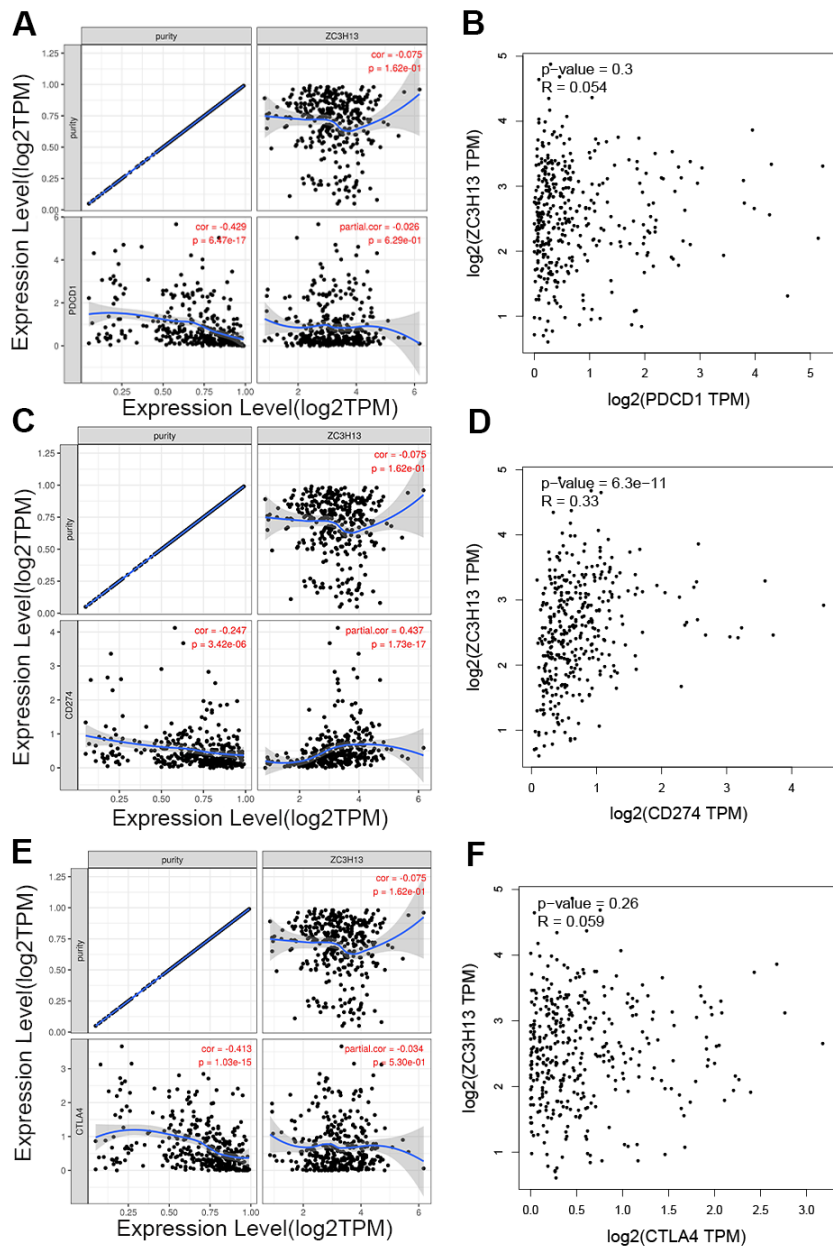


SUPPLEMENTARY FIGURES



Supplementary Figure 1. (A, B) Heatmaps showing the top 50 genes positively and negatively correlated with ZC3H13 in LIHC.



Supplementary Figure 2. Correlation of ZC3H13 expression with PD-1, PD-L1, and CTLA-4 expression in HCC. (A) Spearman correlation of ZC3H13 with the expression of PD-1 in HCC adjusted by purity using TIMER. (B) The expression correlation of ZC3H13 with PD-1 in HCC determined by the GEPIA database. (C) Spearman correlation of ZC3H13 with the expression of PD-L1 in HCC adjusted by purity using TIMER. (D) The expression correlation of ZC3H13 with PD-L1 in HCC determined by the GEPIA database. (E) Spearman correlation of ZC3H13 with the expression of CTLA-4 in HCC adjusted by purity using TIMER. (F) The expression correlation of ZC3H13 with CTLA-4 in HCC determined by the GEPIA database.

Binding Site of hsa-miR-362-3p on ZC3H13:

Show 10 entries

BindingSite	Class	Alignment
chr13:46537300-46537305[-]	6mer	Target: 5' cuAUUACUU-AAUCUGUGUGUu 3' miRNA : 3' acUUAGGAACUUAUCCACACaA 5'

Binding Site of hsa-miR-362-3p on ZC3H13:

Show 10 entries

BindingSite	Class	Alignment
chr13:46537403-46537410[-]	8mer	Target: 5' caucuacccaAAUGCAGGUGUGUa 3' miRNA : 3' acuuaggaacUUA--UCCACACaA 5'

Binding Site of hsa-miR-425-5p on ZC3H13:

Show 10 entries

BindingSite	Class	Alignment
chr13:46537291-46537297[-]	7mer-m8	Target: 5' uuAAUCUGUGUGUAGUGUCAUc 3' : miRNA : 3' agUUGCCUCACUAGCACAGUAa 5'

Supplementary Figure 3. The binding site of miR-362/miR-425 to ZC3H13 was determined by the starBase database.