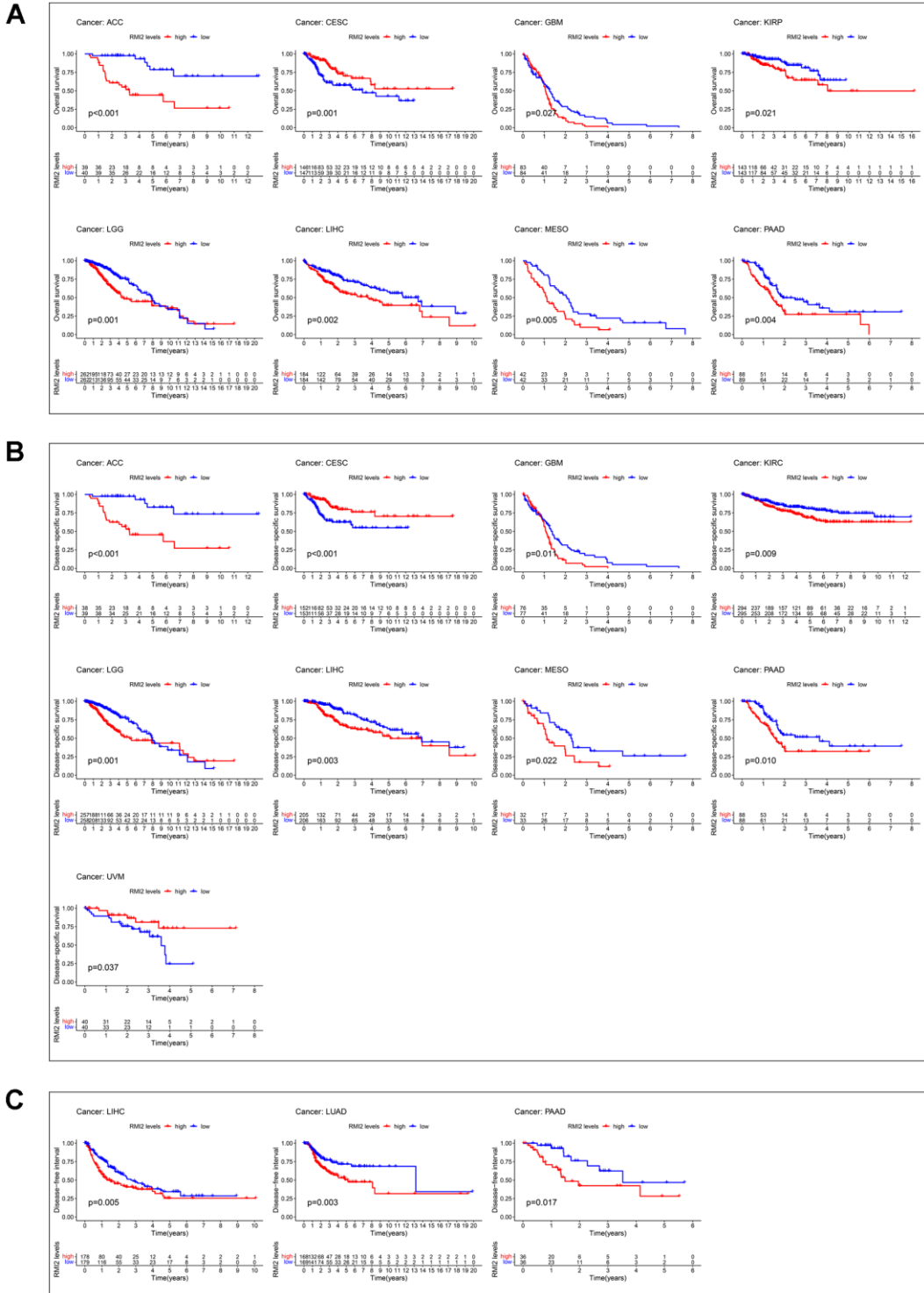
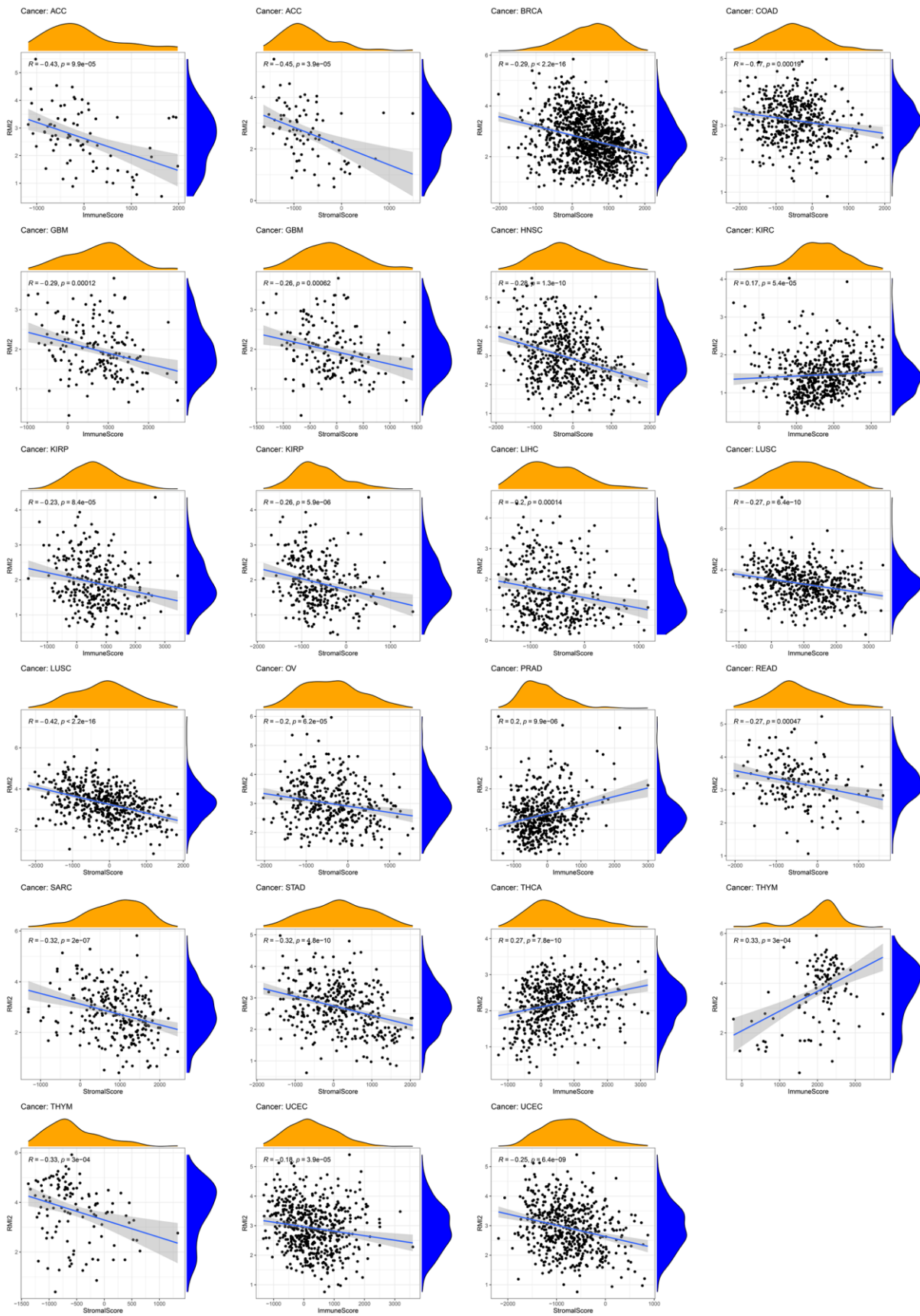


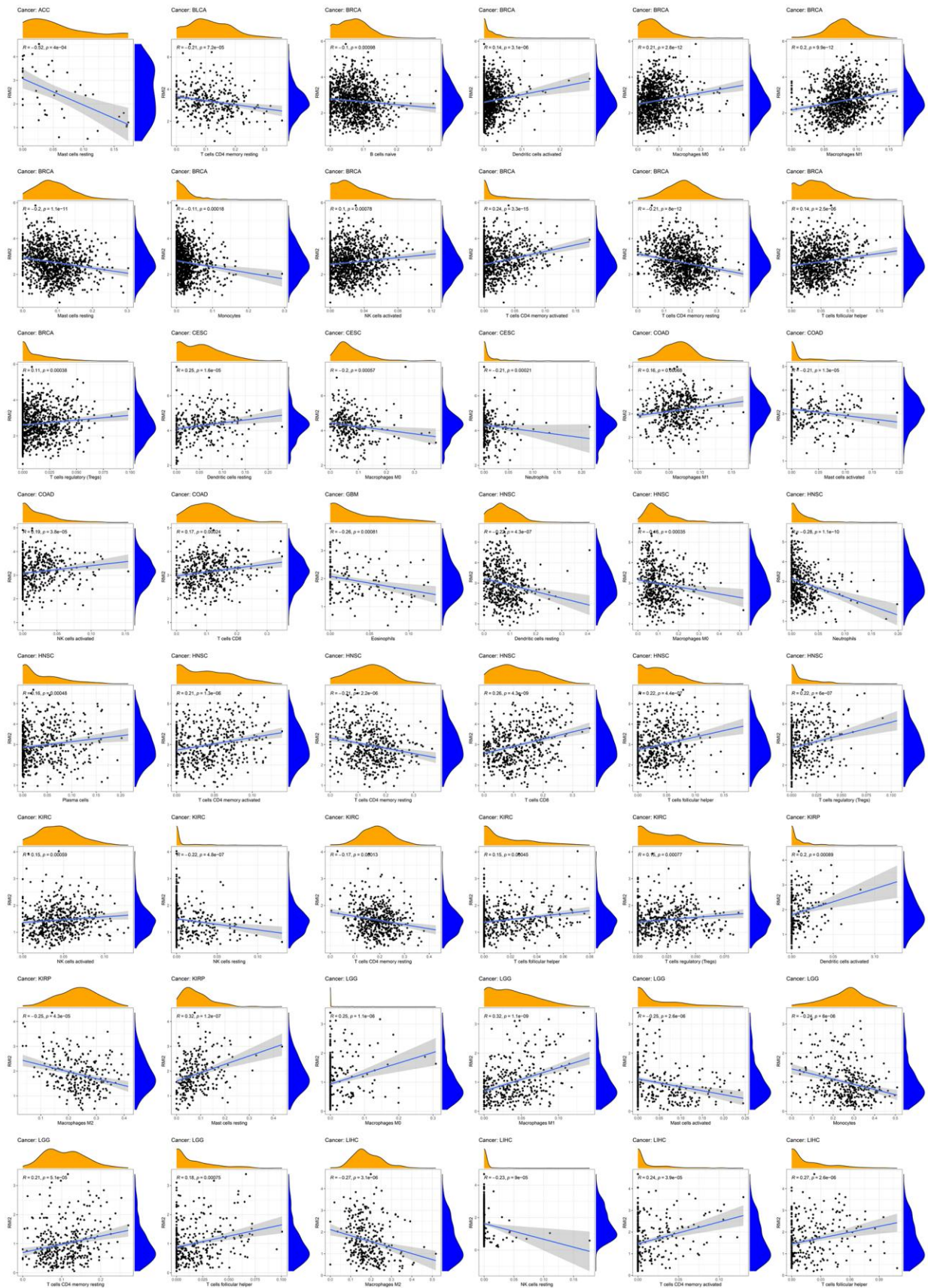
SUPPLEMENTARY FIGURES



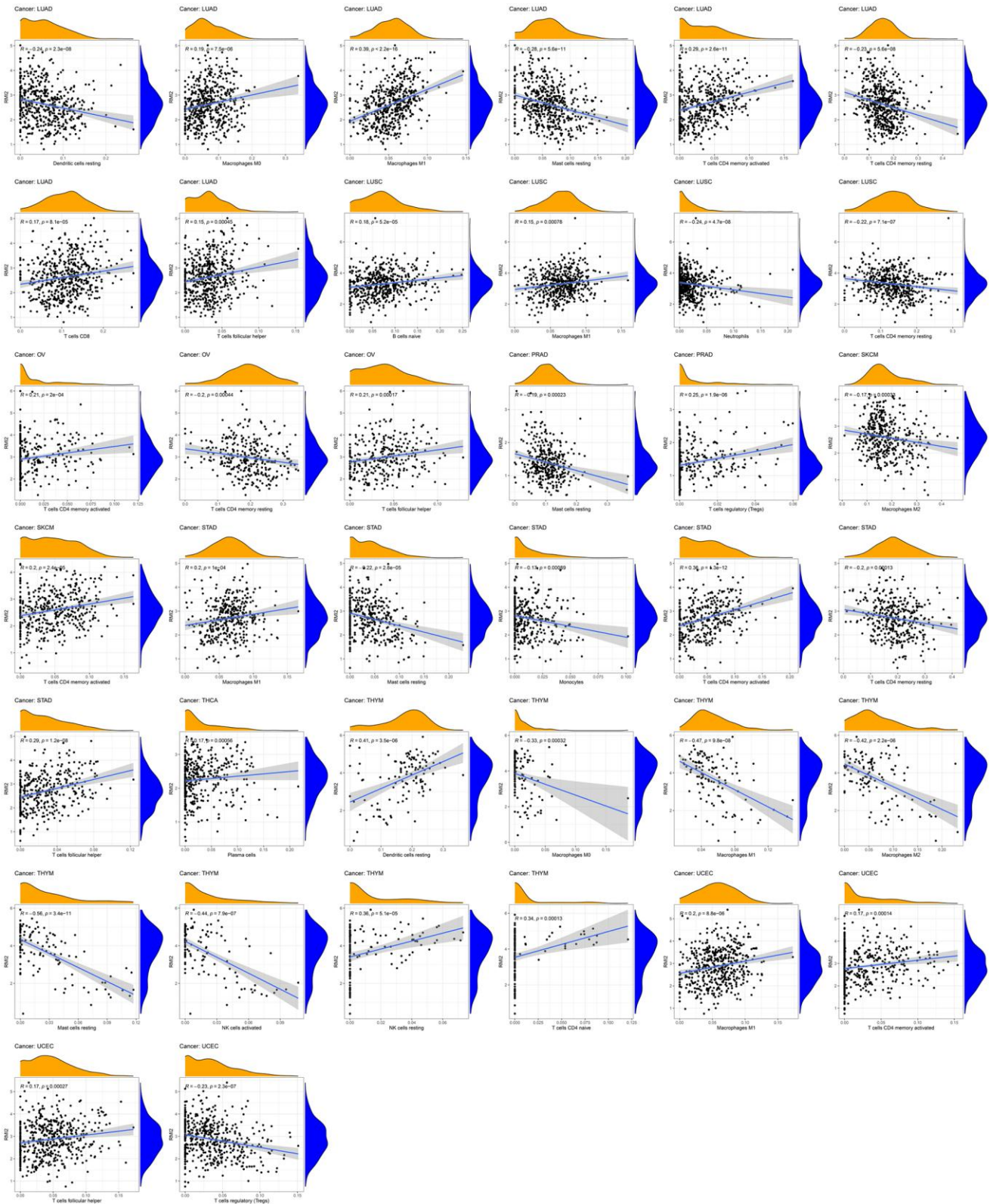
Supplementary Figure 1. Correlation between *RM12* expression in patients with OS, PFI, DSS, and DFI. (A–C) (A) Survival analyses of *RM12* expression via the Kaplan–Meier OS curves in ACC, CESC, GBM, KIRC, LGG, LIHC, MESO and PAAD. (B) Survival analyses of *RM12* expression via the Kaplan–Meier DSS curves in ACC, CESC, GBM, KIRC, LGG, LIHC, MESO, PAAD, UVM. (C) Survival analyses of *RM12* expression via the Kaplan–Meier DFI curves in LIHC, LUAD and PAAD.



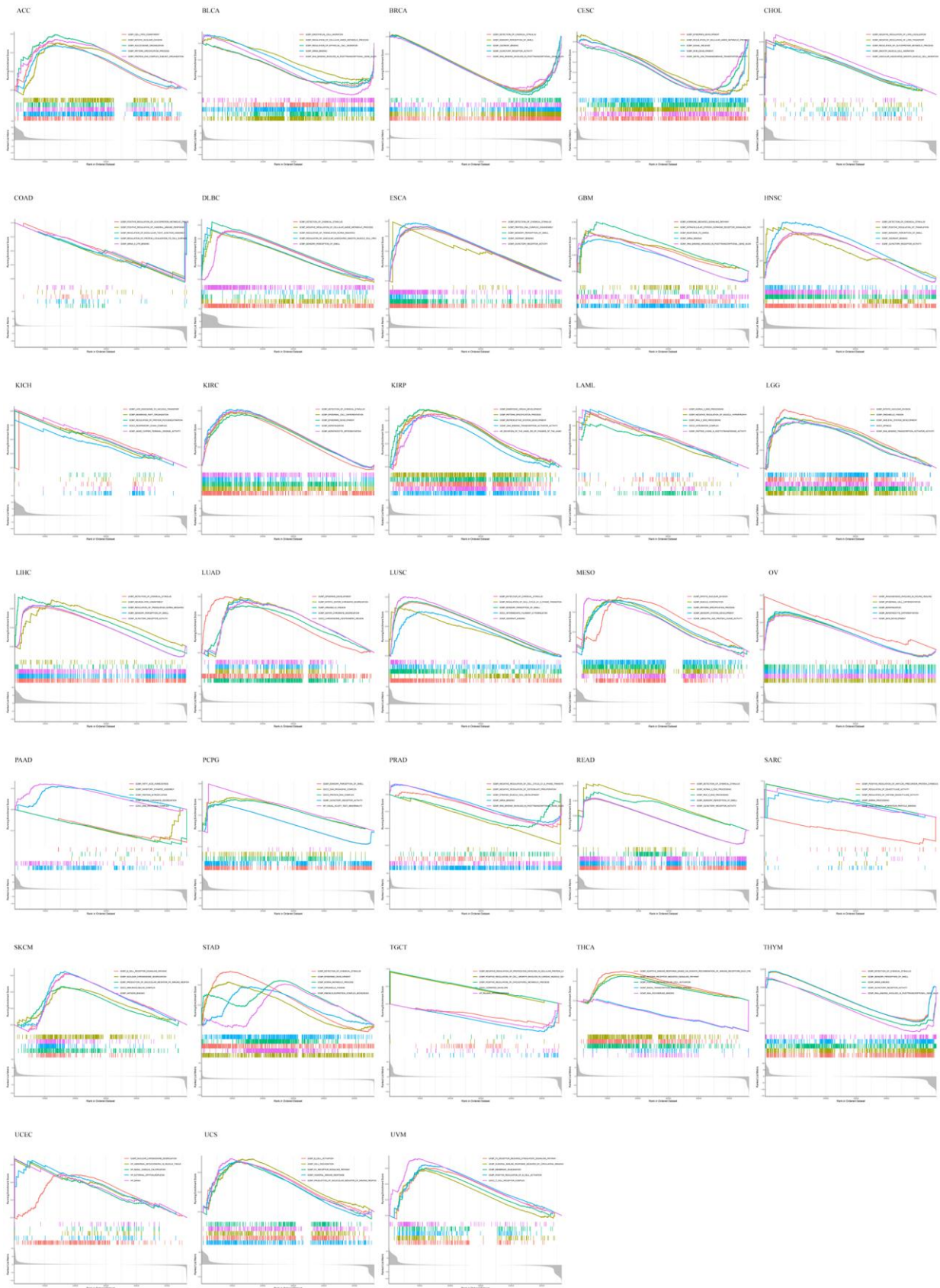
Supplementary Figure 2. Correlation between *RM12* and ImmuneScore and StromalScore in pan-cancer (P < 0.05).



Supplementary Figure 3. The relationship between *RMI2* and specific immune infiltrating cells in pan-cancer ($P < 0.05$).



Supplementary Figure 4. The relationship between *RMI2* and specific immune infiltrating cells in pan-cancer.



Supplementary Figure 5. GO enrichment plots from GSEA in various cancers. $P < 0.05$ and results higher than 5 were considered and shown.