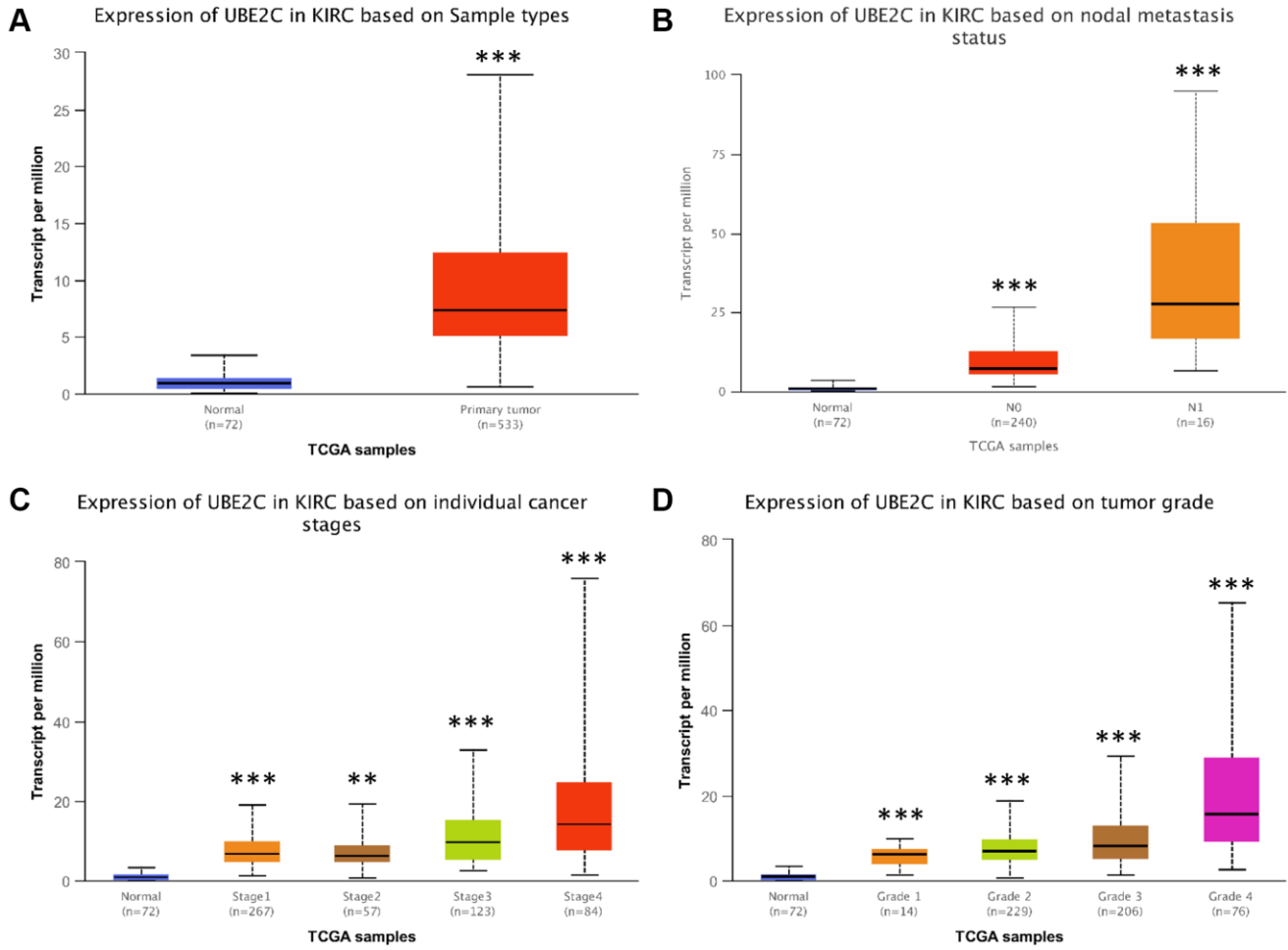
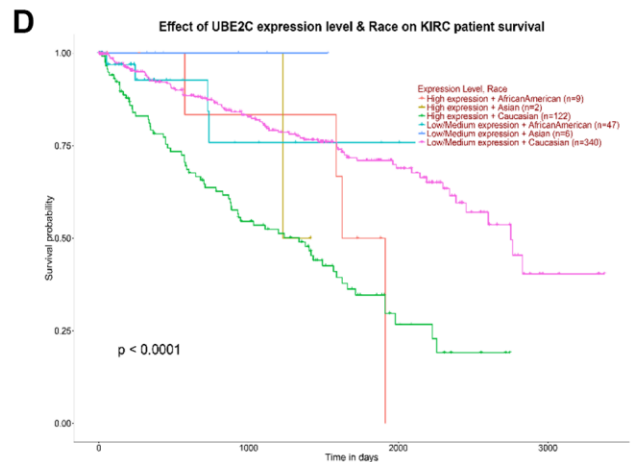
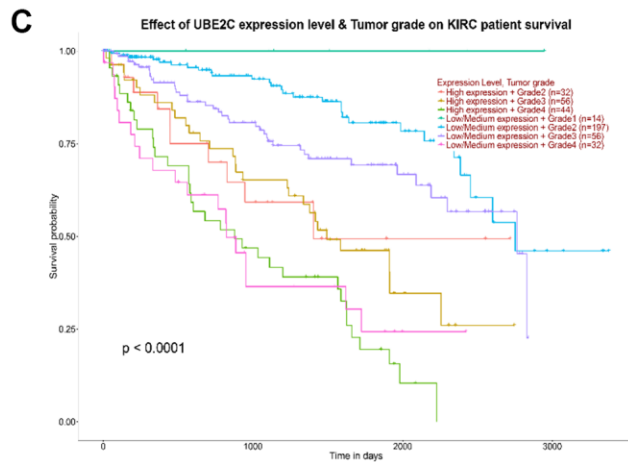
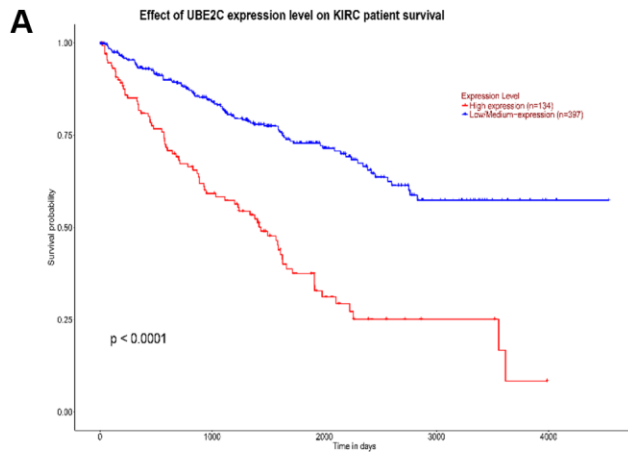


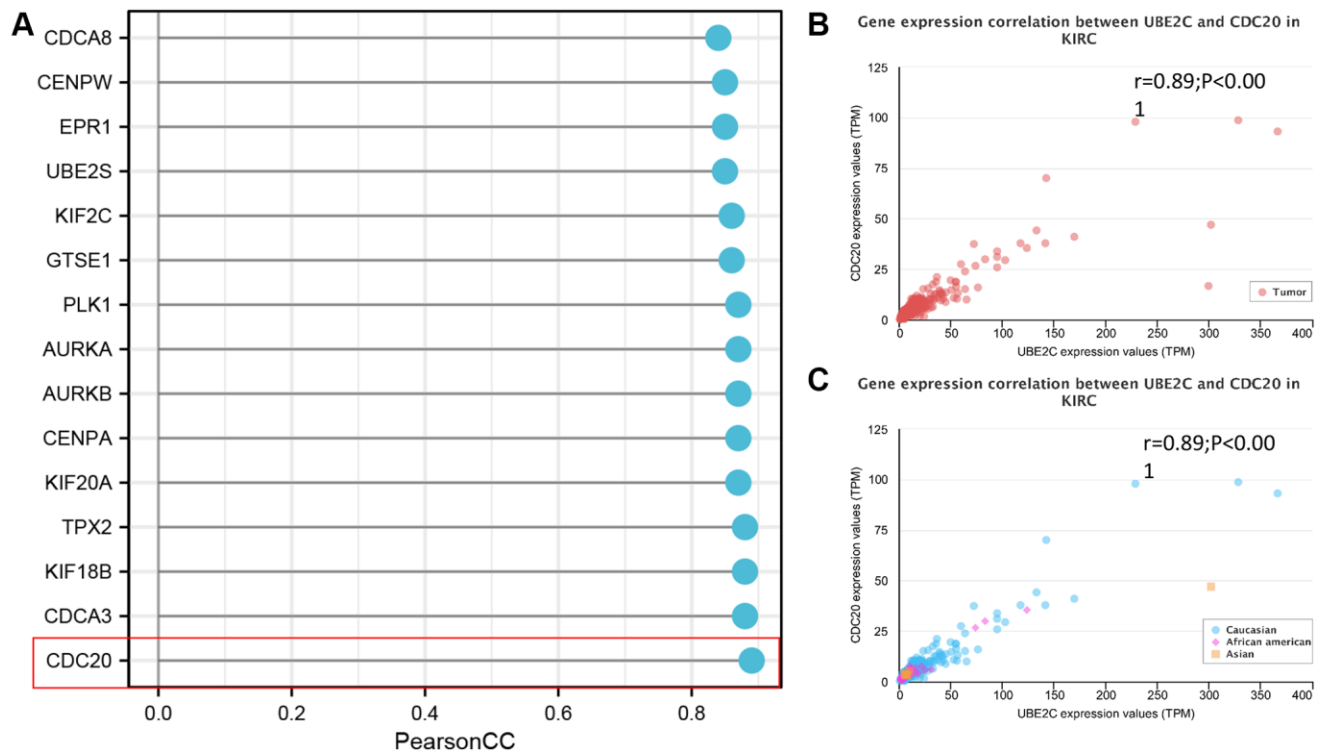
SUPPLEMENTARY FIGURES



Supplementary Figure 1. Association of UBE2C mRNA expression with clinicopathologic characteristics. (A) sample types. (B) nodal metastasis status. (C) individual cancer stages. (D) tumor grade.



Supplementary Figure 2. The prognostic value of mRNA levels of UBE2C factor and subclinical factors in ccRCC patients. (A) The overall survival of UBE2C in PRCC for all cases ($P < 0.0001$). **(B)** The overall survival of UBE2C and gender in PRCC ($P < 0.0001$). **(C)** The overall survival of UBE2C and tumor grade in PRCC ($P < 0.0001$). **(D)** The overall survival of UBE2C and race in PRCC ($P < 0.0001$).



Supplementary Figure 3. The relationship of UBE2C with checkpoint inhibitors in PRCC. (A) The Pearson correlation of UBE2C with 47 different checkpoint inhibitors and 15 of them was displayed. (B and C) The coefficient and *p*-value of UBE2C and CDC20 were shown on the graph.