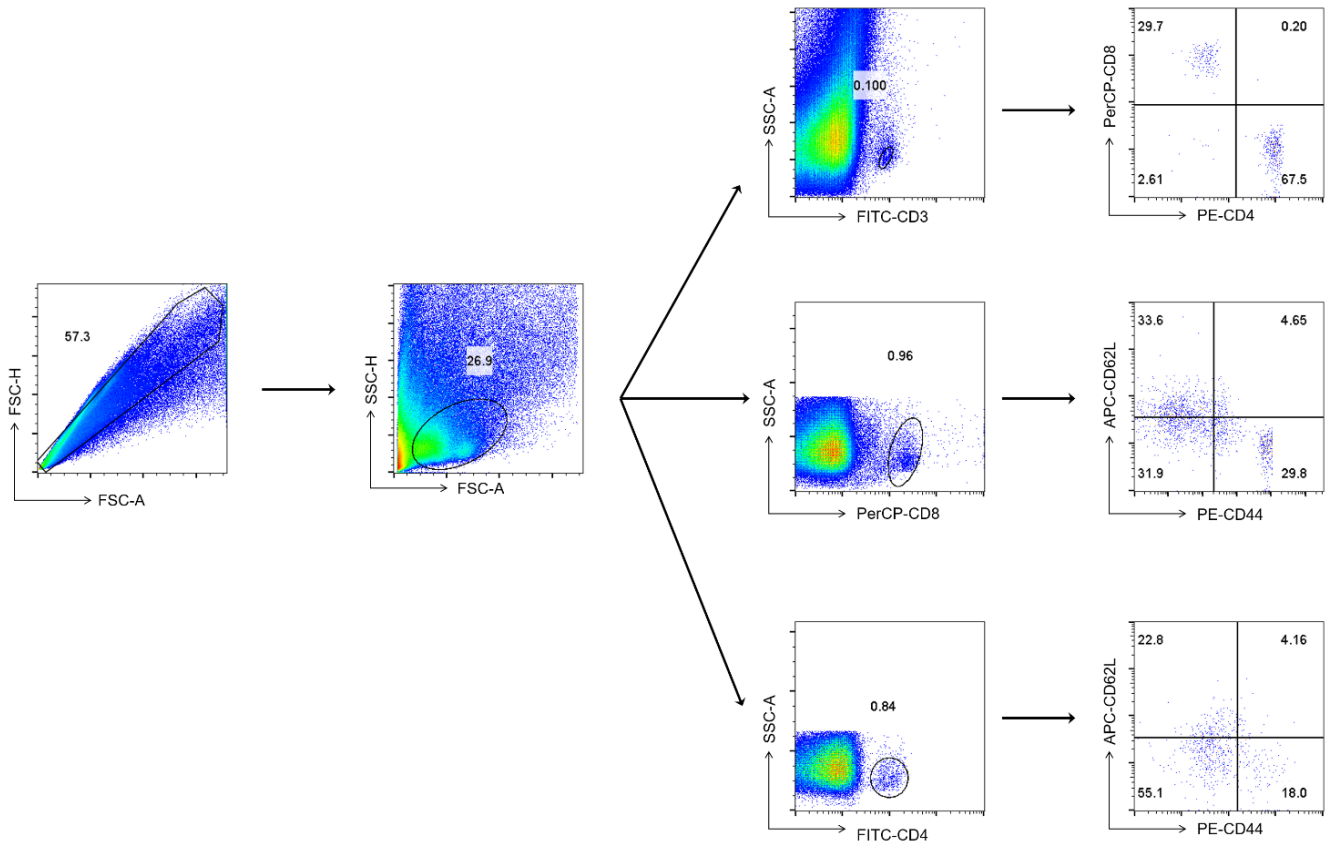
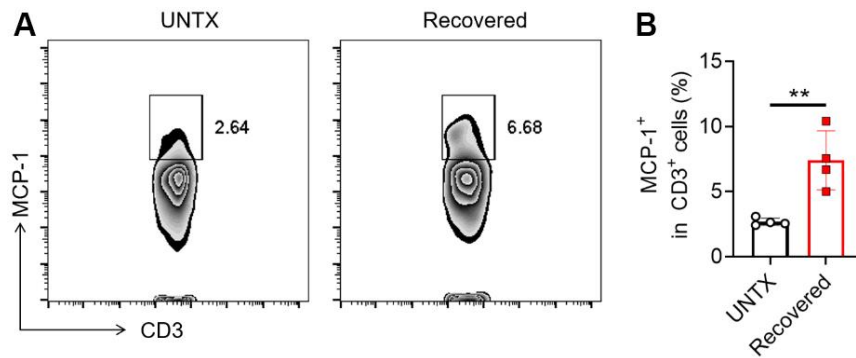


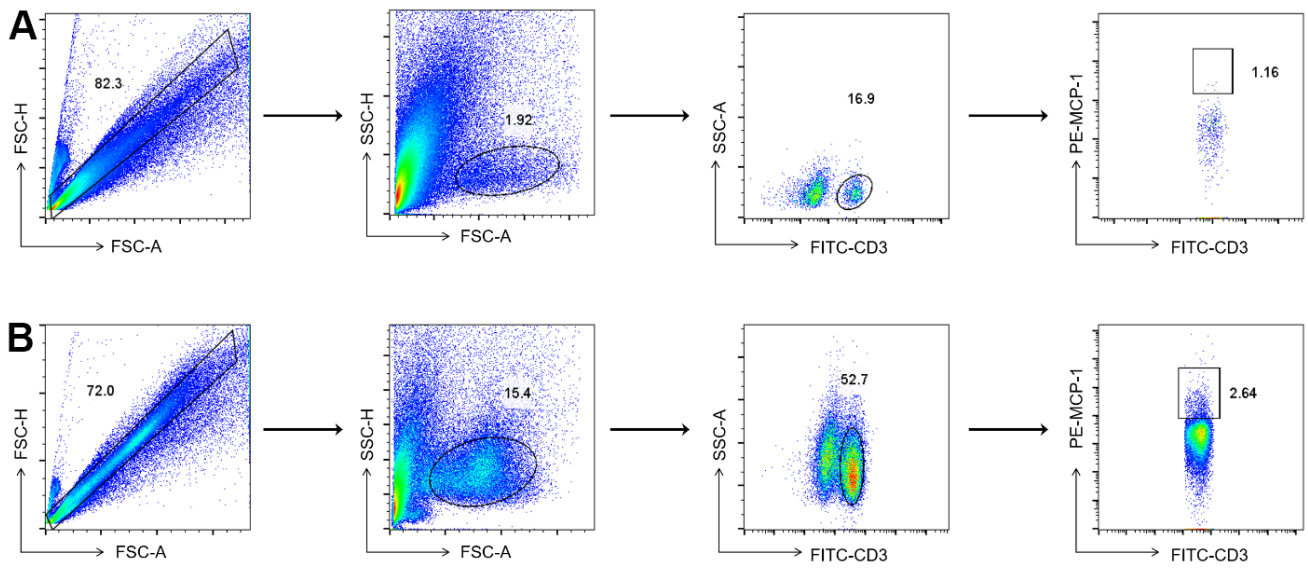
SUPPLEMENTARY FIGURES



Supplementary Figure 1. (Related to Figure 1). Flow cytometry gating strategy for analysis of T cells subsets.



Supplementary Figure 2. (A) Flow cytometric analysis of MCP-1⁺ in CD3⁺ cells in peripheral blood and (B) corresponding quantification results (n=4). Data are shown as the mean ± SD. Statistical significance was calculated by Student's t test (two-tailed) and one-way ANOVA using the Tukey posttest. ***P* < 0.01.



Supplementary Figure 3. (Related to Figure 2). Flow cytometry gating strategy for analysis of MCP-1⁺ in CD3⁺ cells. (A) Lung; (B) Peripheral blood.