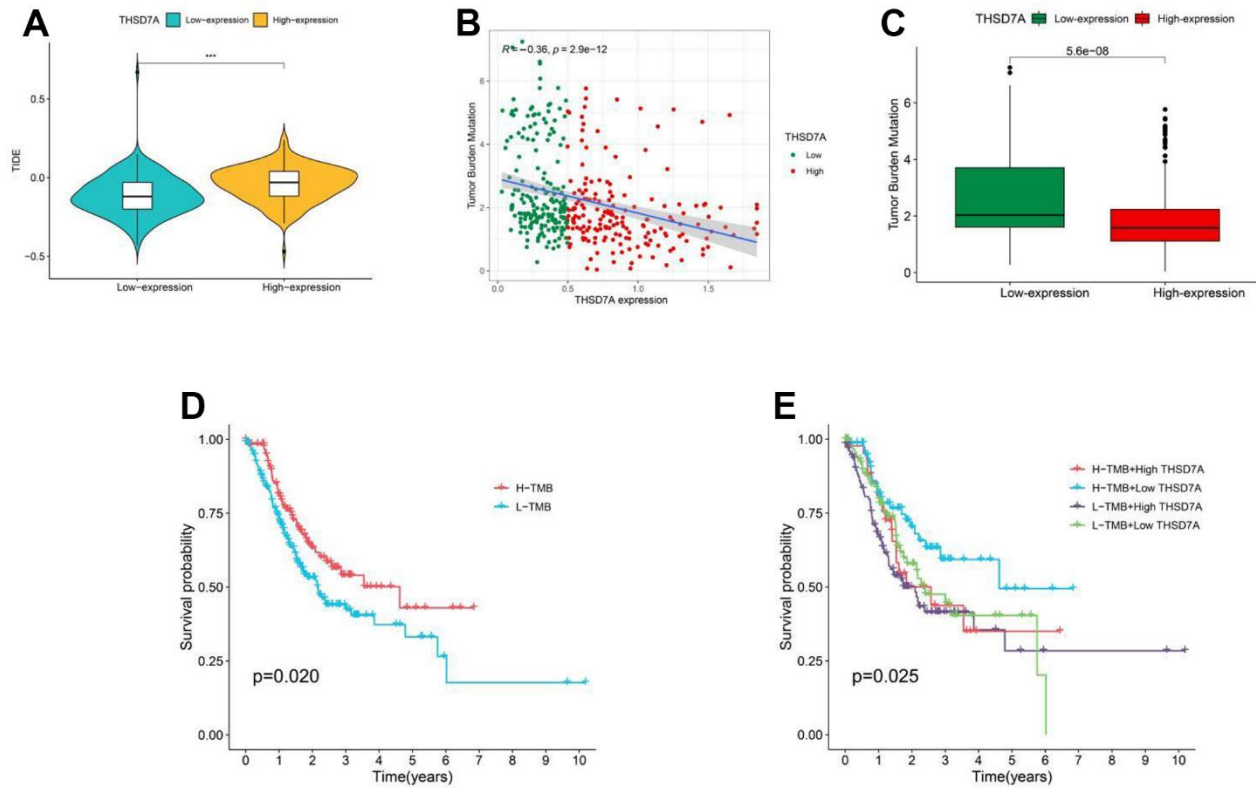
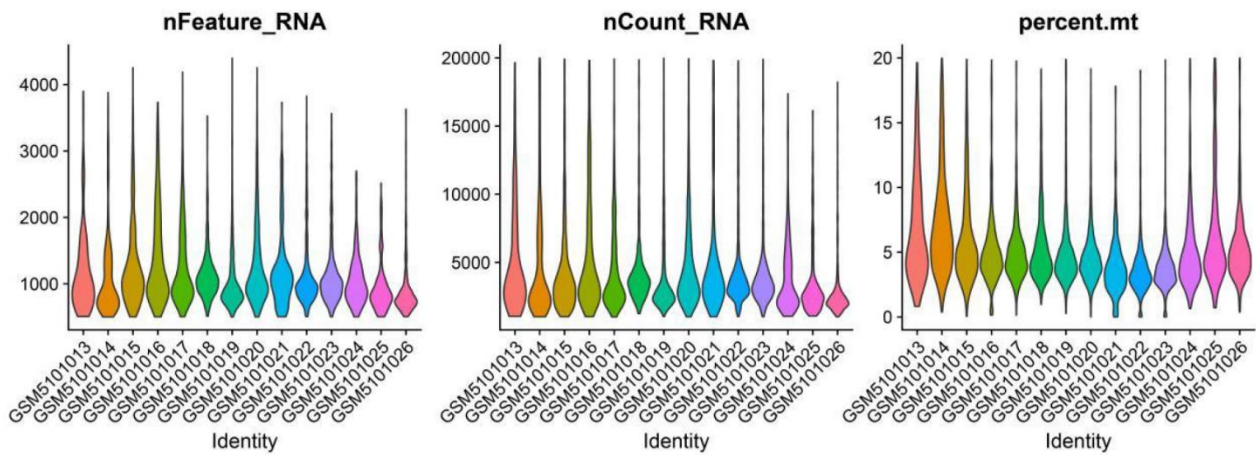


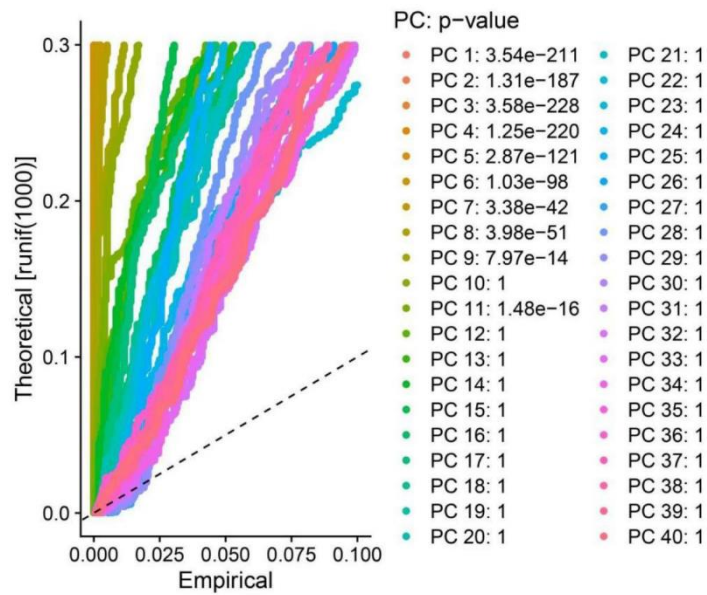
**SUPPLEMENTARY FIGURES**



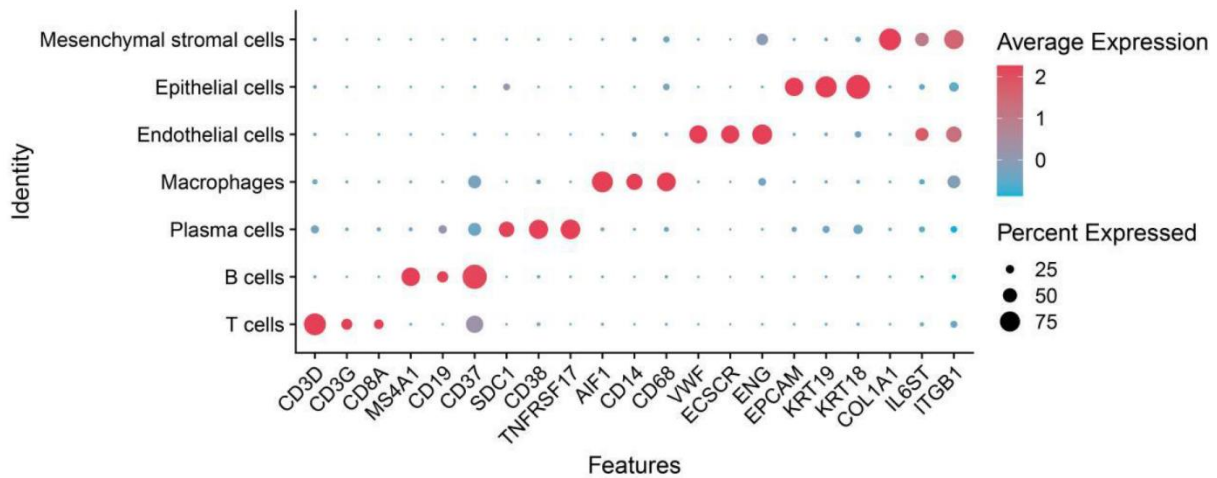
**Supplementary Figure 1. Evaluation of immunotherapy efficacy and tumor mutation burden.** (A) Evaluation of immunotherapy effectiveness in individuals with high- and low-THSD7A expression. (B) Correlation between THSD7A expression and TMB. (C) Distribution of TMB scores in high and low THSD7A groups (H: High; L: Low). (D) Gastric cancer patients in high- and low-TMB groups have different survival rates. (E) Patients with various levels of THSD7A expression and TMB scores had variable survival rates for gastric cancer (\*:  $P < 0.05$ , \*\*:  $P < 0.01$ , \*\*\*:  $P < 0.001$ , ns:  $P > 0.05$ ).



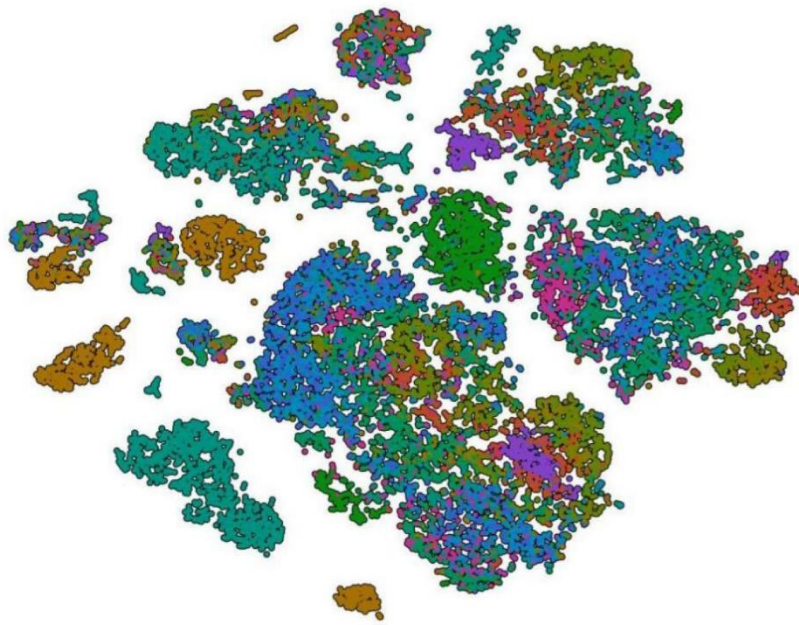
**Supplementary Figure 2. Quality control of scRNA-seq data.**



Supplementary Figure 3. First nine principal components (PCs) obtained from principal component analysis (PCA) dimensionality reduction analysis.



Supplementary Figure 4. Marker genes corresponding to seven cell subpopulations.



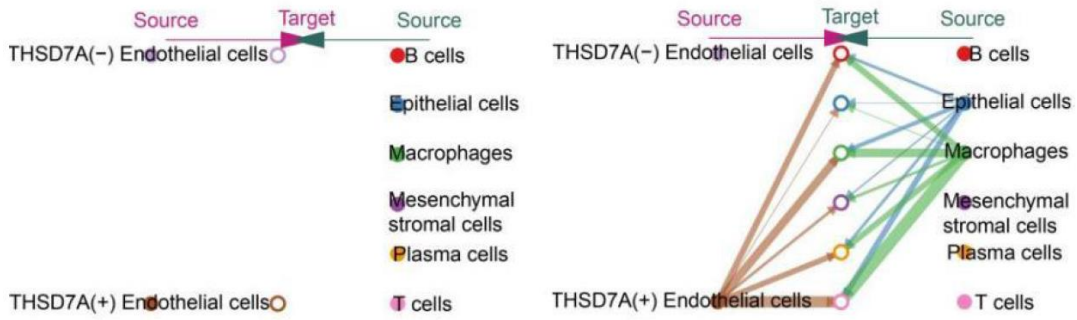
- GSM5101013
- GSM5101014
- GSM5101015
- GSM5101016
- GSM5101017
- GSM5101018
- GSM5101019
- GSM5101020
- GSM5101021
- GSM5101022
- GSM5101023
- GSM5101024
- GSM5101025
- GSM5101026

Supplementary Figure 5. The t-SNE plots classified by the source of samples.

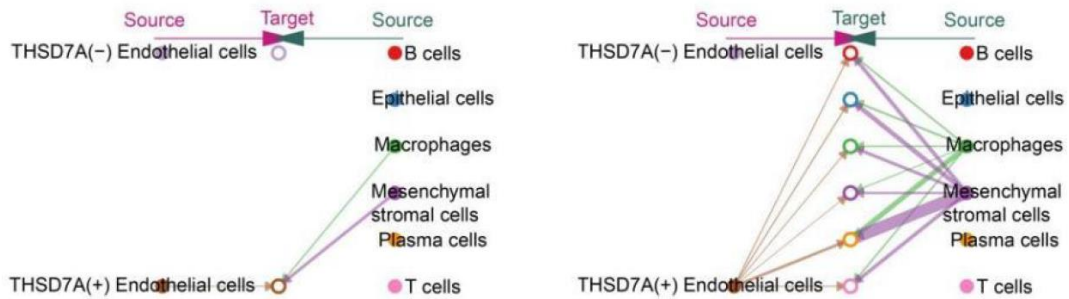




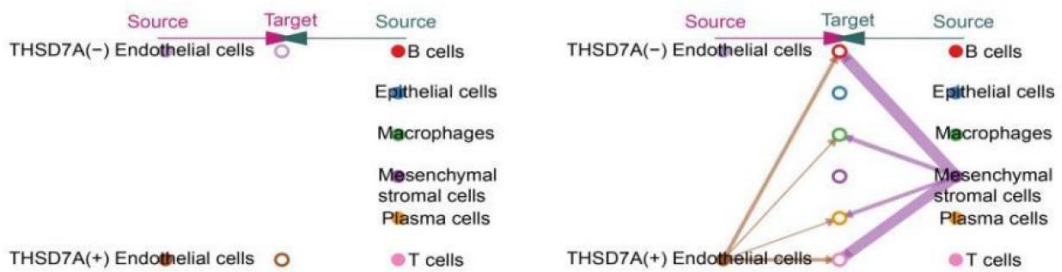
### GALECTIN signaling pathway network



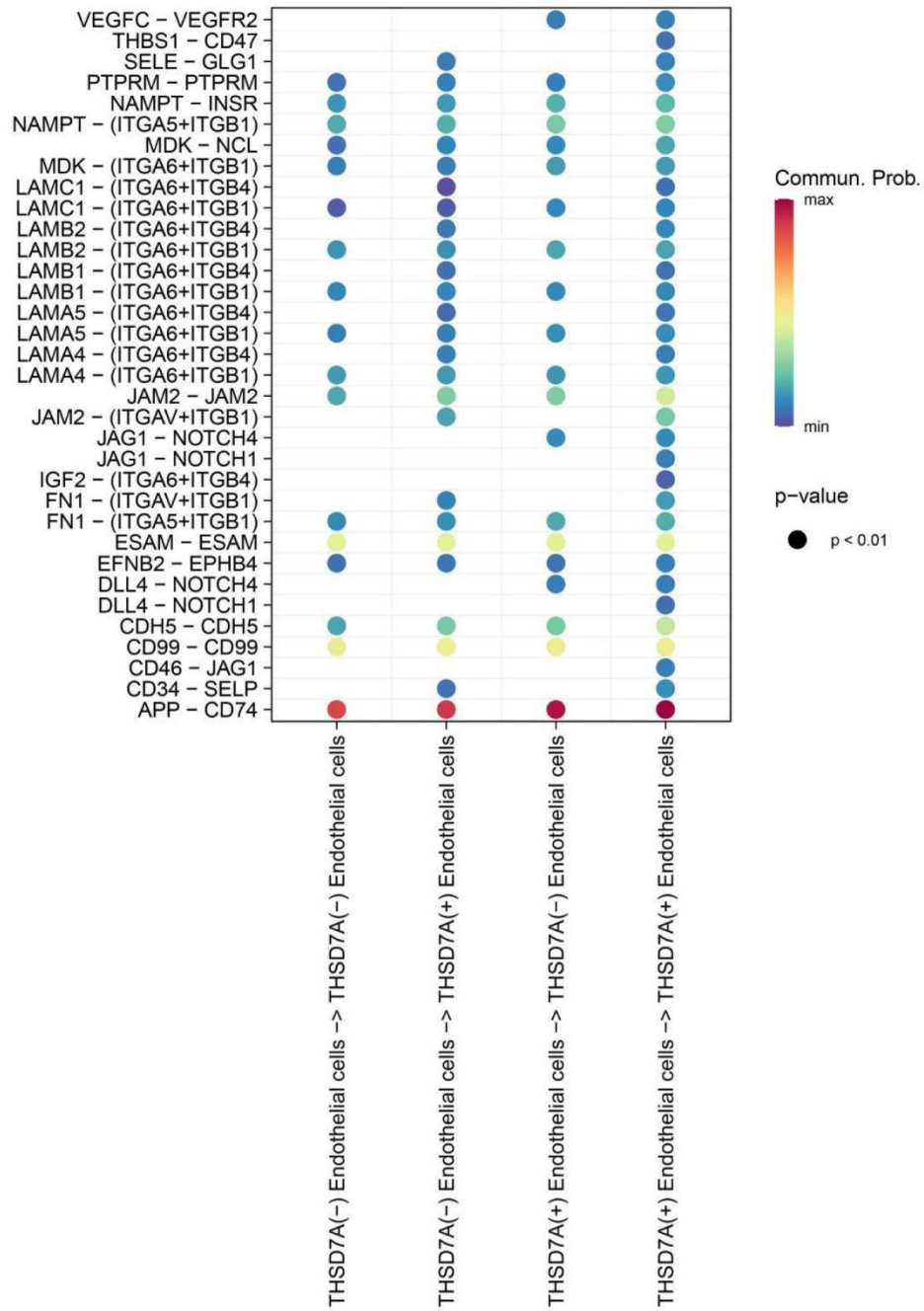
### THBS signaling pathway network



### CXCL signaling pathway network



Supplementary Figure 7. Intercellular communication among galectin, CXCL and THBS signalling pathways.



Supplementary Figure 8. Cellular interactions within endothelial cell subpopulations.