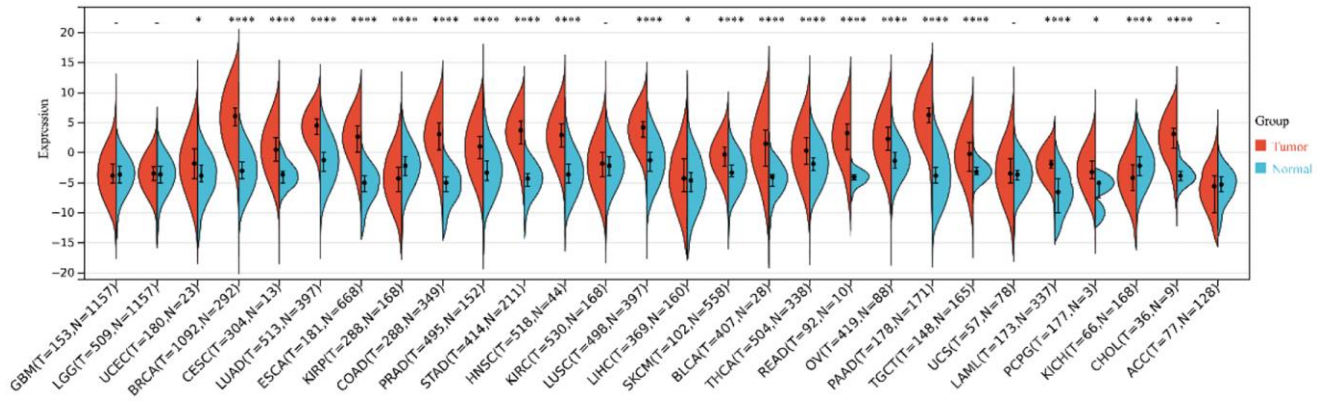
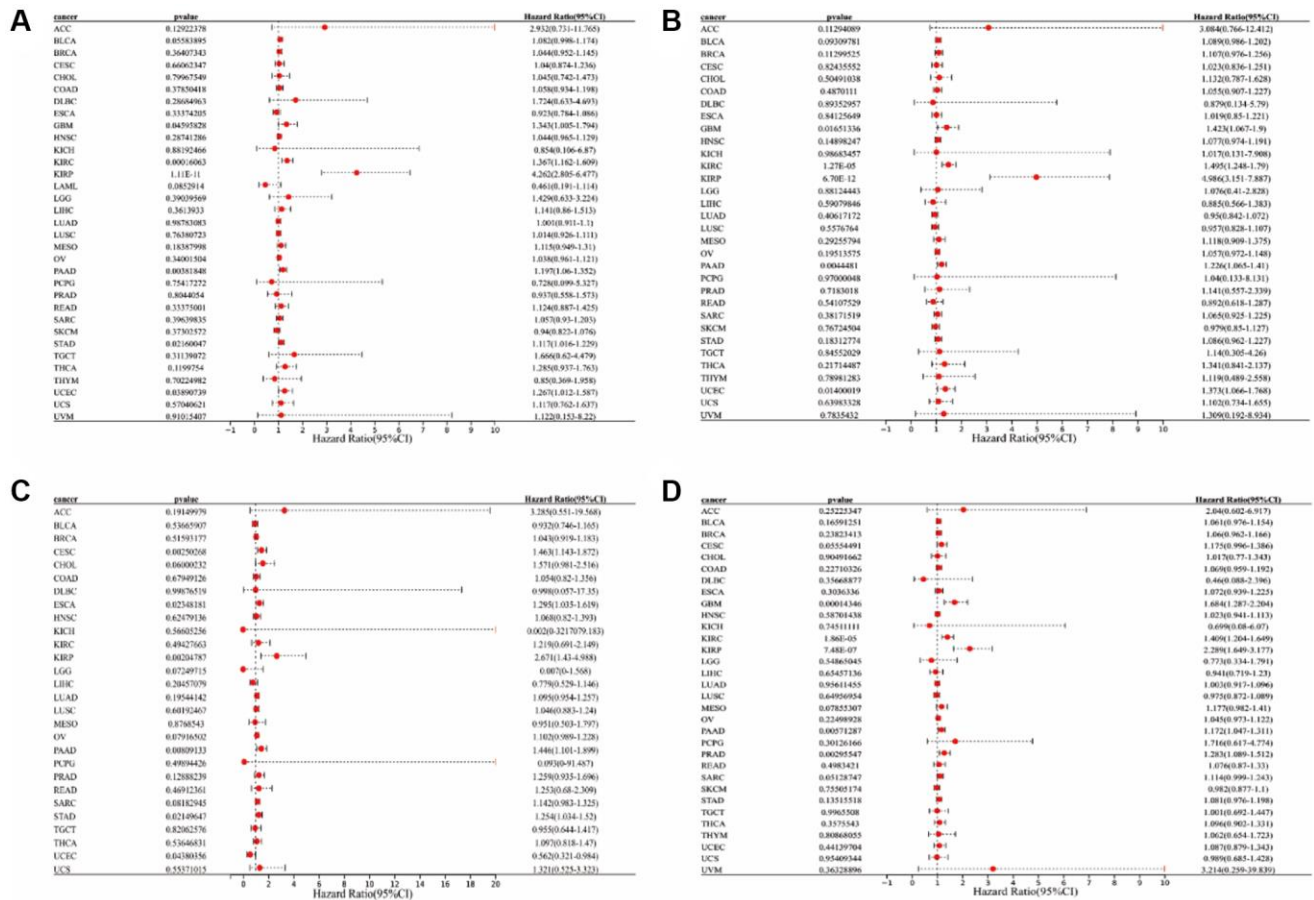


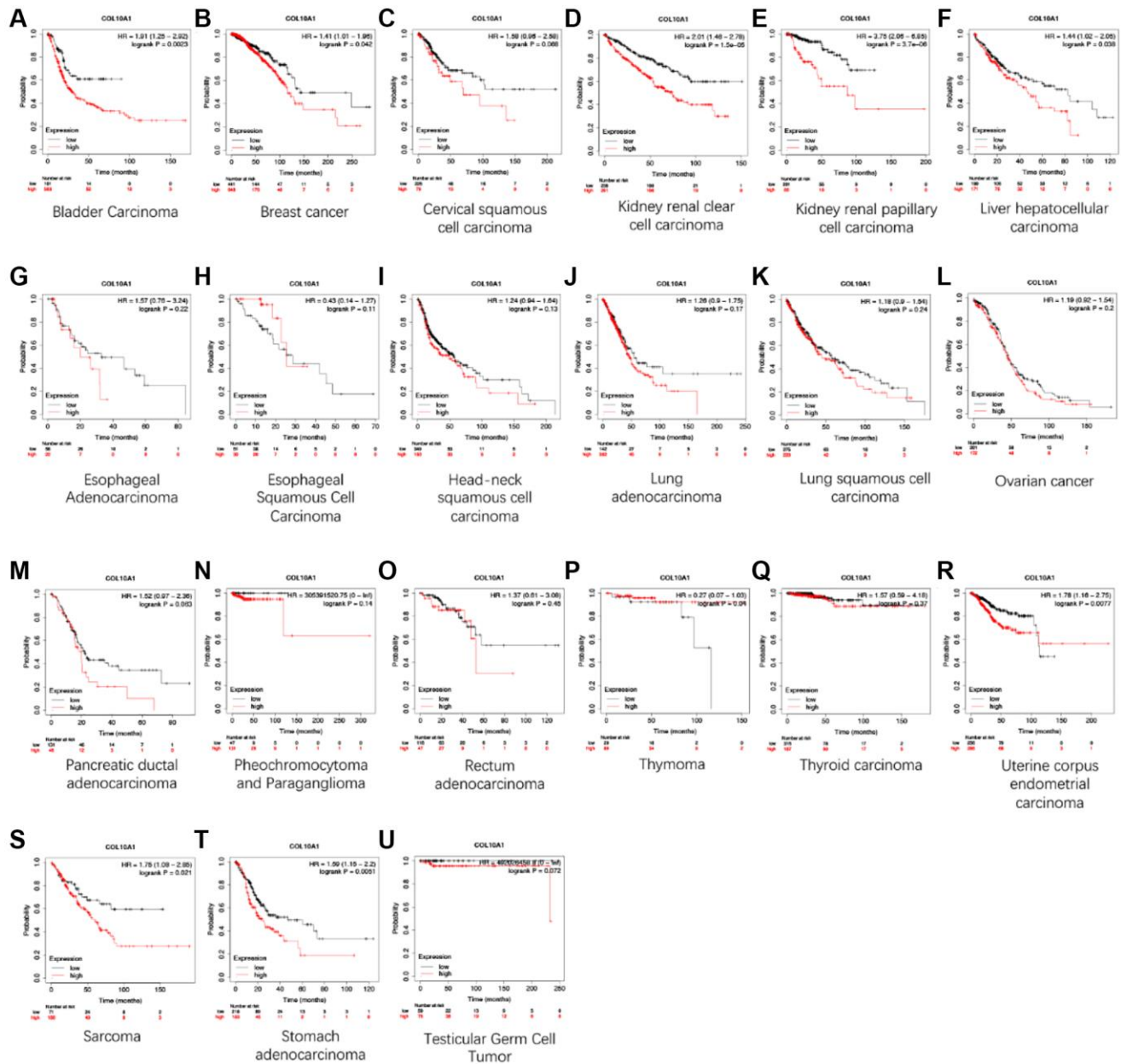
SUPPLEMENTARY FIGURES



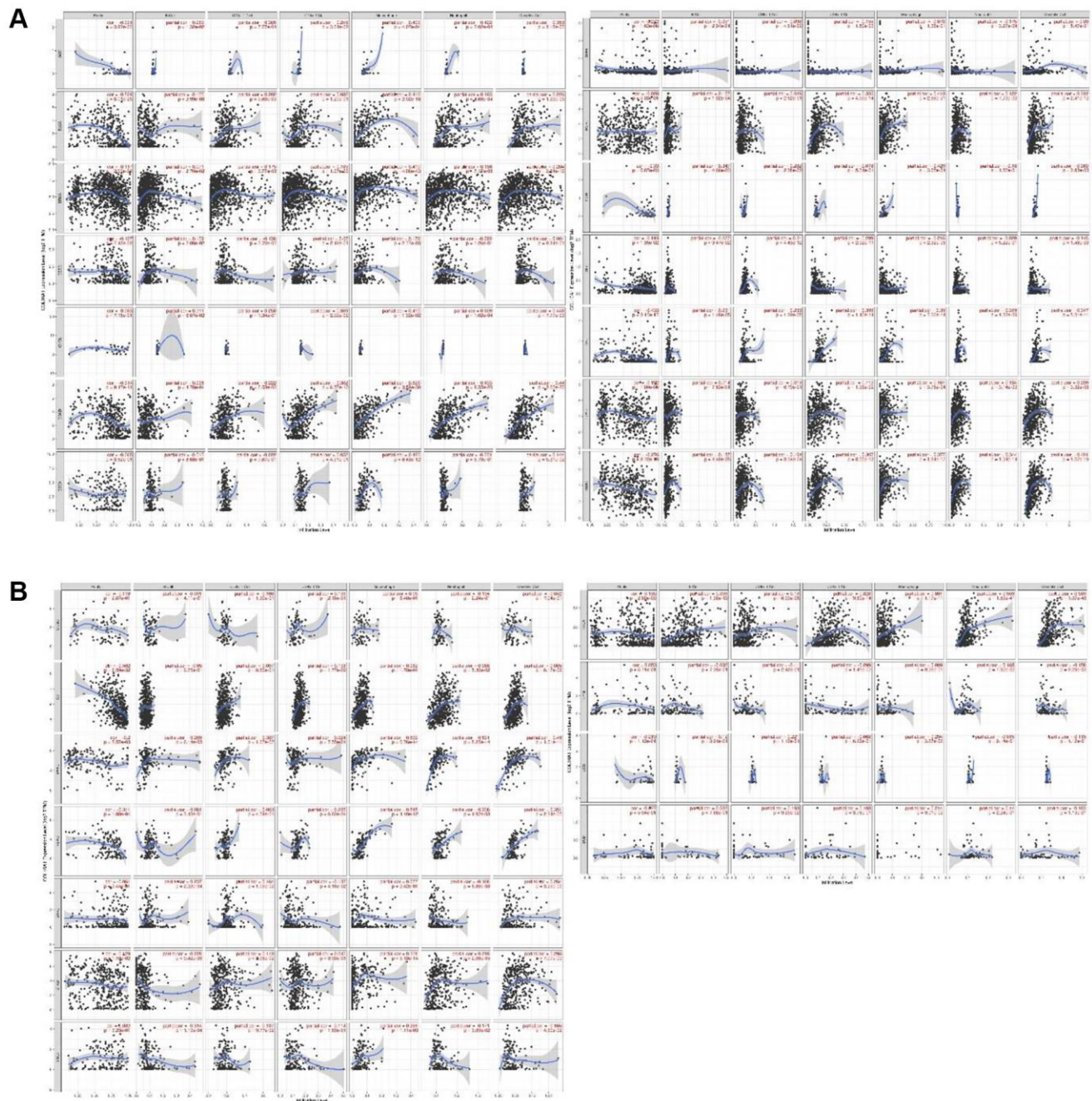
Supplementary Figure 1. The Sangerbox website analyzed the results of differential expression of COL10A1 in pan-cancer after combining data from TCGA and GTEx databases.



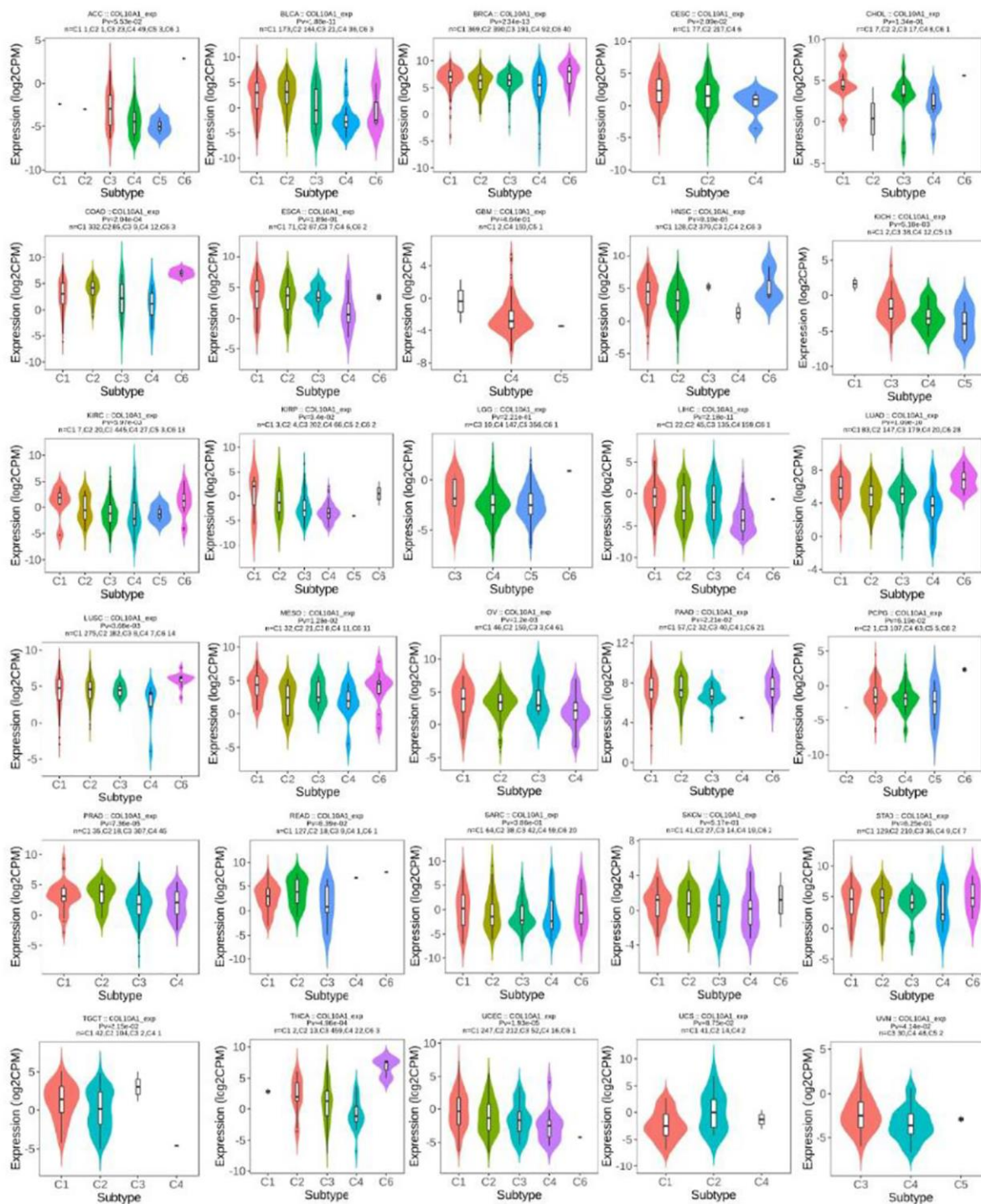
Supplementary Figure 2. Cox regression analysis of COL10A1 in pan-cancer. OS (A), DSS (B), DFS (C), PFS (D).



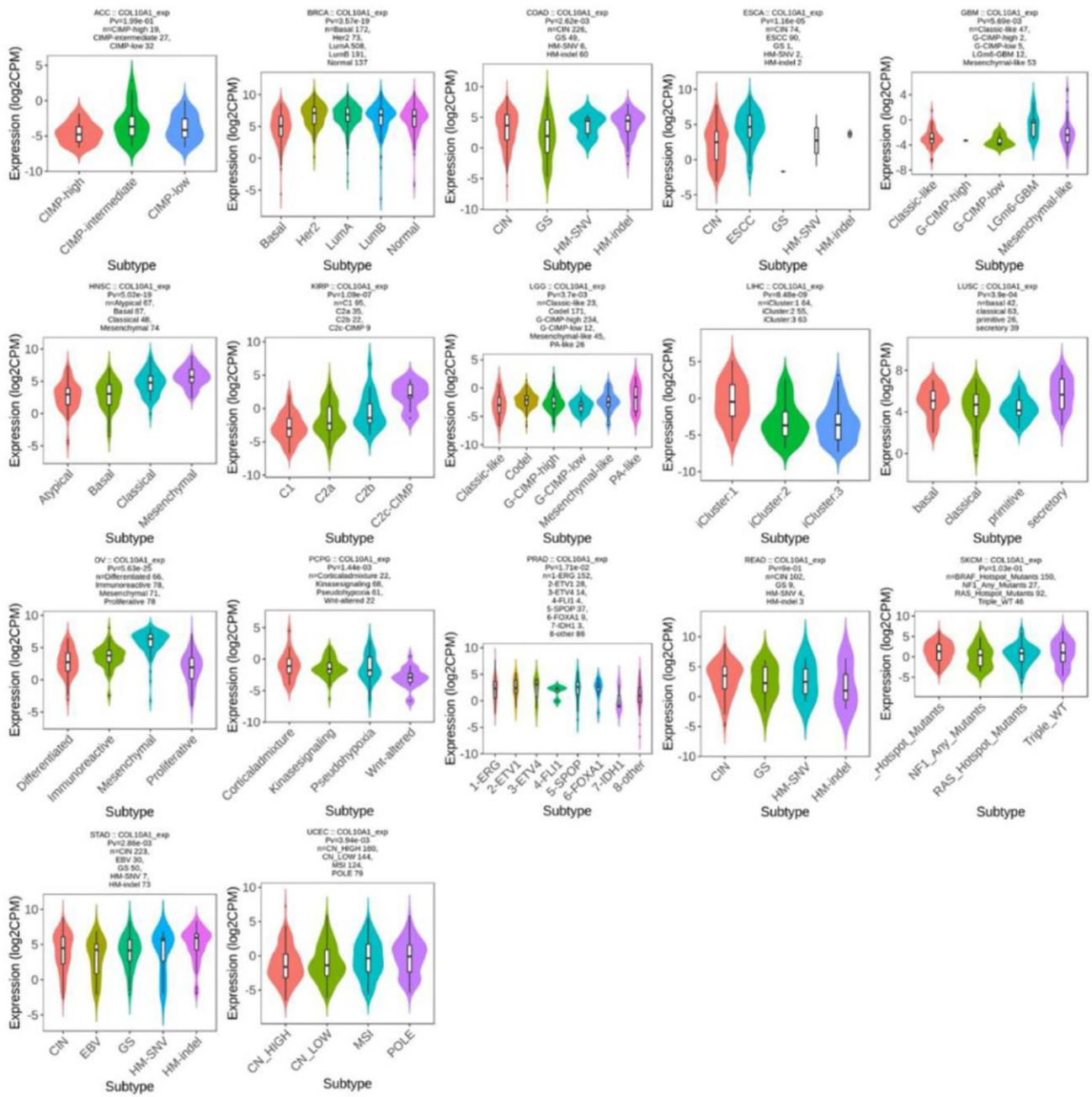
Supplementary Figure 3. The prognostic value of COL10A1 expression on overall survival time in pan-cancer was analyzed using Kaplan-Meier plotter (A-U).



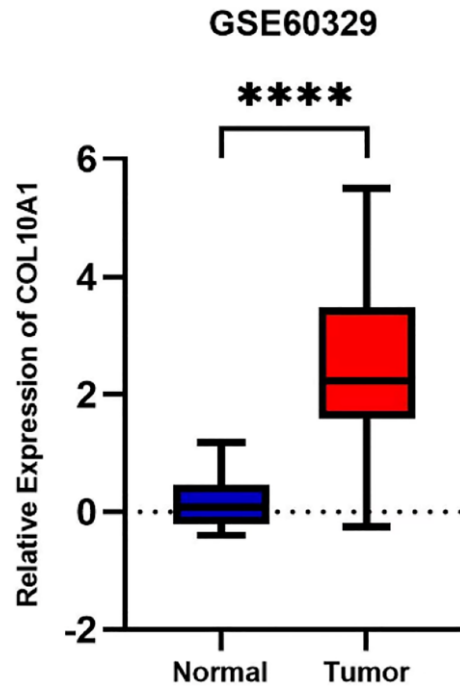
Supplementary Figure 4. (A, B) Results of the remaining immune cell infiltration.



Supplementary Figure 5. TISIDB database on the relationship between pan-cancer COL10A1 expression and immunological subtypes.



Supplementary Figure 6. TISIDB database on the relationship between pan-cancer COL10A1 expression and molecular subtypes.



Supplementary Figure 7. Expression trends of COL10A1 in GEO databases GSE60329.