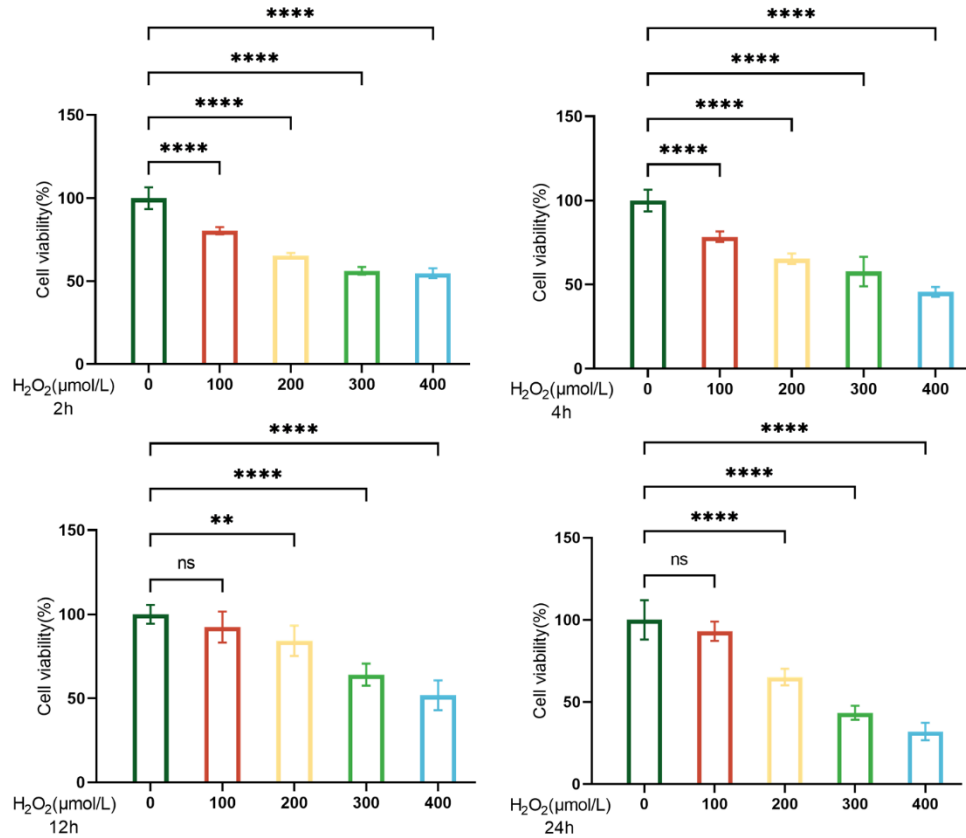


SUPPLEMENTARY FIGURE



Supplementary Figure 1. Screening of H₂O₂-stimulated cellular oxidative stress model for optimal dose and duration of action. Different concentrations of H₂O₂ (0, 100, 200, 300, and 400 μM) stimulated the cells for 2h, 4h, 12h, and 24h, respectively, and it was observed that the cell viability was maintained at about 60%-70% at the concentration of 200 μM of H₂O₂, which could be used as the subsequent intervention concentration, as detected by CCK8.