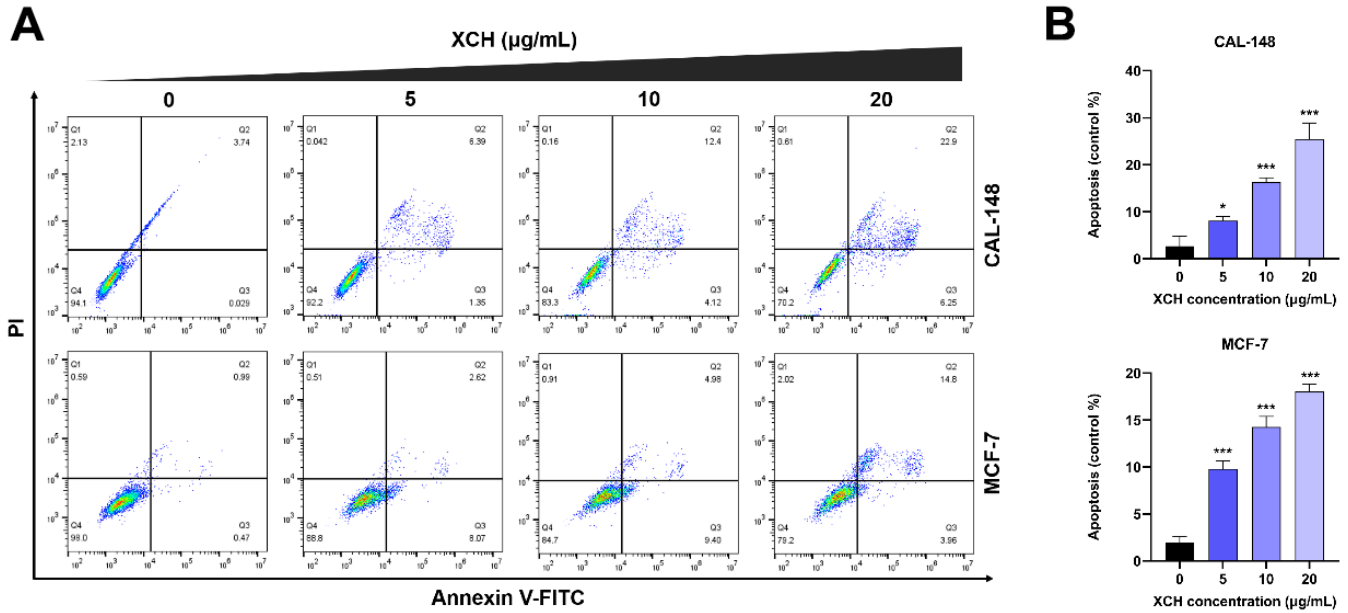
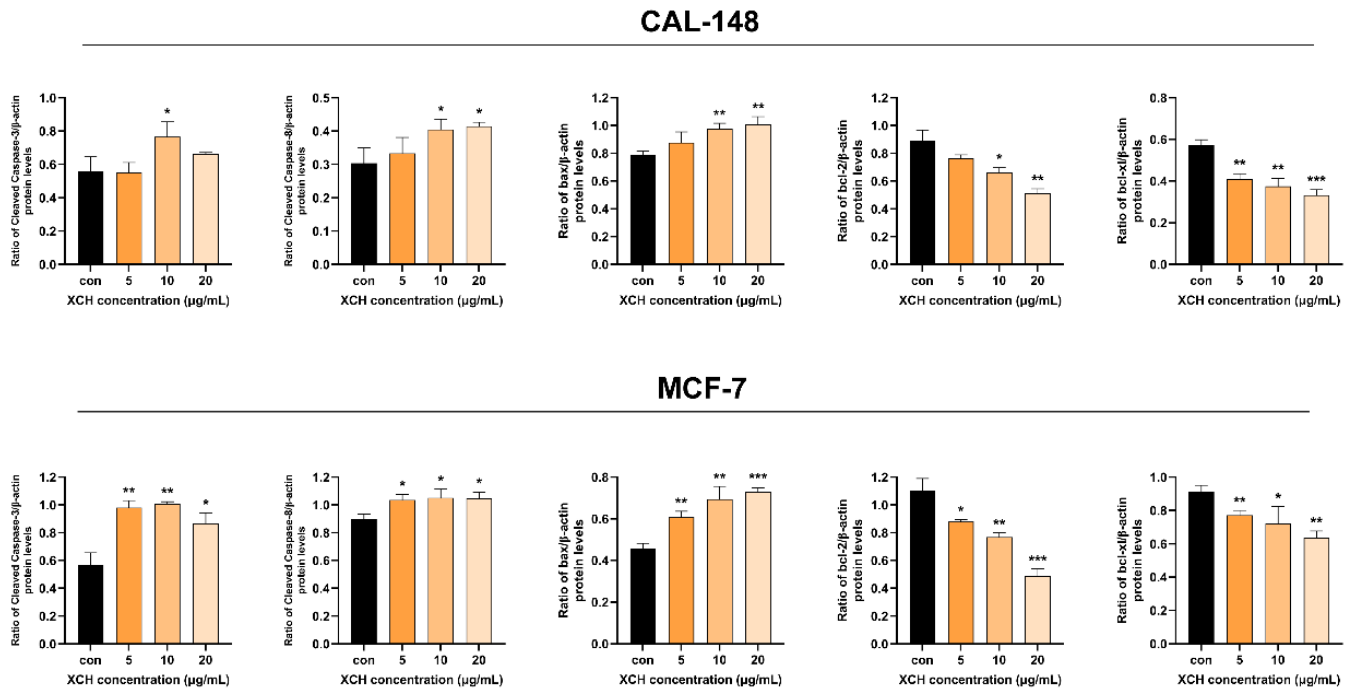


SUPPLEMENTARY FIGURES



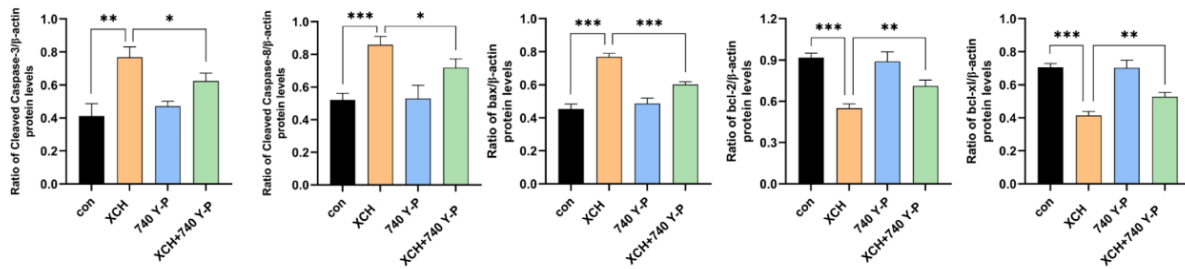
Supplementary Figure 1. (A, B) Detection of the effect of XCH decoction on breast cancer cell apoptosis by flow cytometry. The data were shown as the mean ± SD of three experiments. * $P < 0.05$, ** $P < 0.01$, *** $P < 0.001$ compared with the control group.



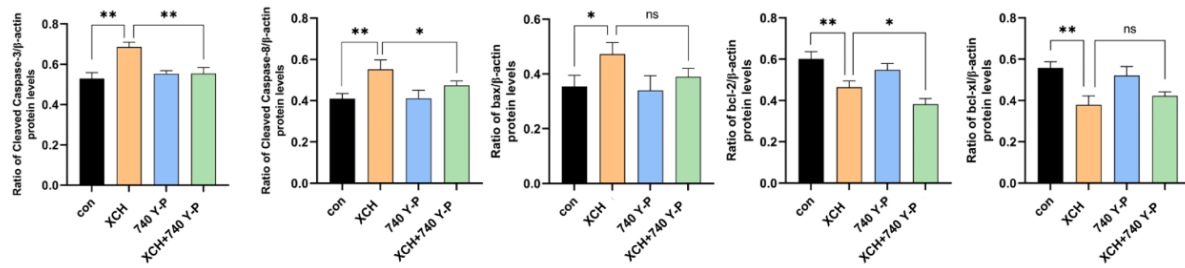
Supplementary Figure 2. Quantification of Cleaved caspase 3, 8, bax, bcl-2 and bcl-xl. The data were shown as the mean ± SD of three experiments. * $P < 0.05$, ** $P < 0.01$, *** $P < 0.001$ compared with the control group.

A

CAL-148

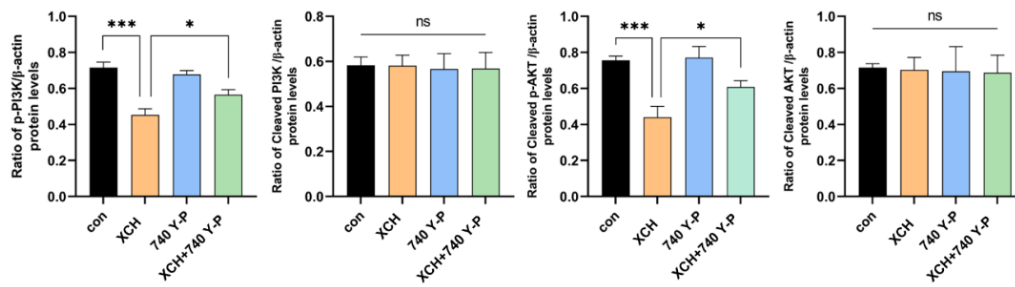


MCF-7

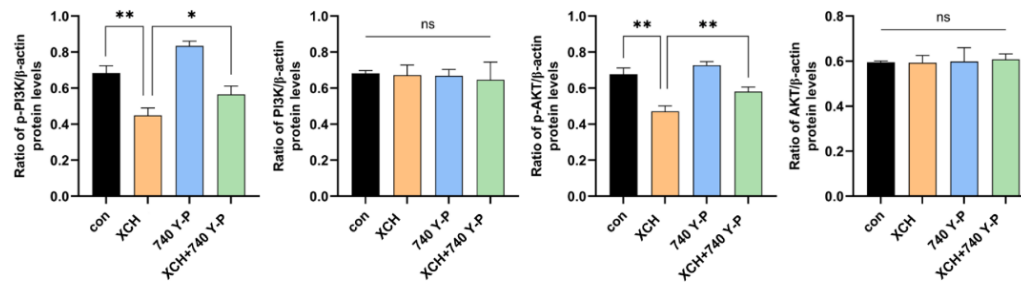


B

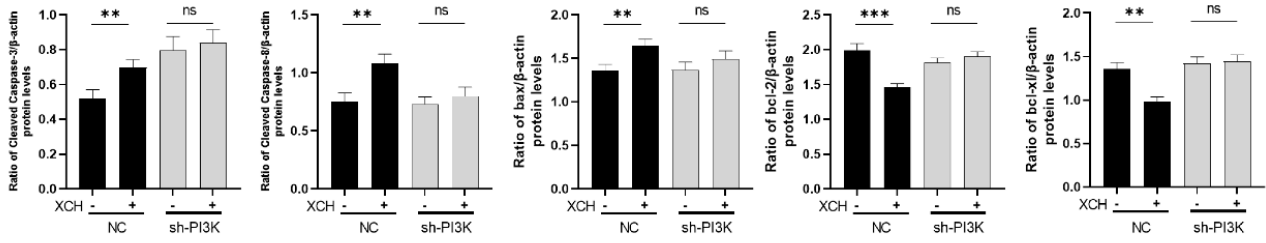
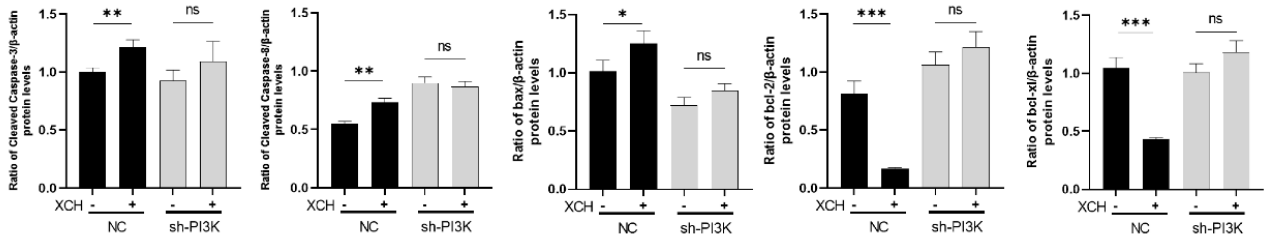
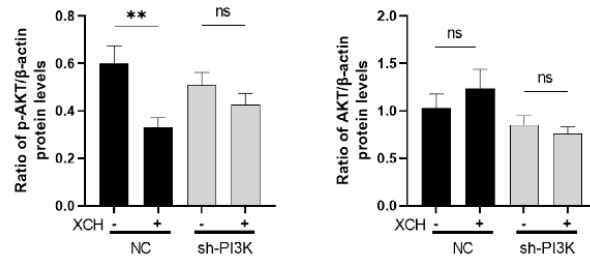
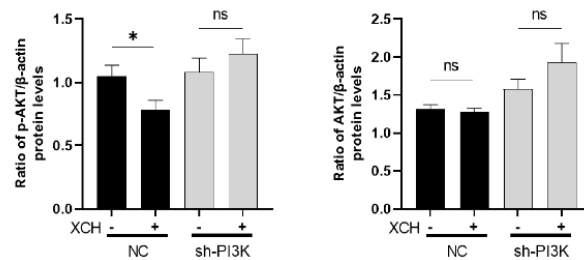
CAL-148



MCF-7



Supplementary Figure 3. (A, B) Quantification of Western blot. Cells were treated with or without XCH decoction for 48 h after PI3K agonist (740 Y-P, 25 μg/mL) pretreatment for 2 h. The data were shown as the mean ± SD of three experiments. **P* < 0.05, ***P* < 0.01, ****P* < 0.001 compared with the control group.

A**CAL-148****MCF-7****B****CAL-148****MCF-7**

Supplementary Figure 4. (A, B) Quantification of Western blot. The data were shown as the mean \pm SD of three experiments. * $P < 0.05$, ** $P < 0.01$ compared with the control group.