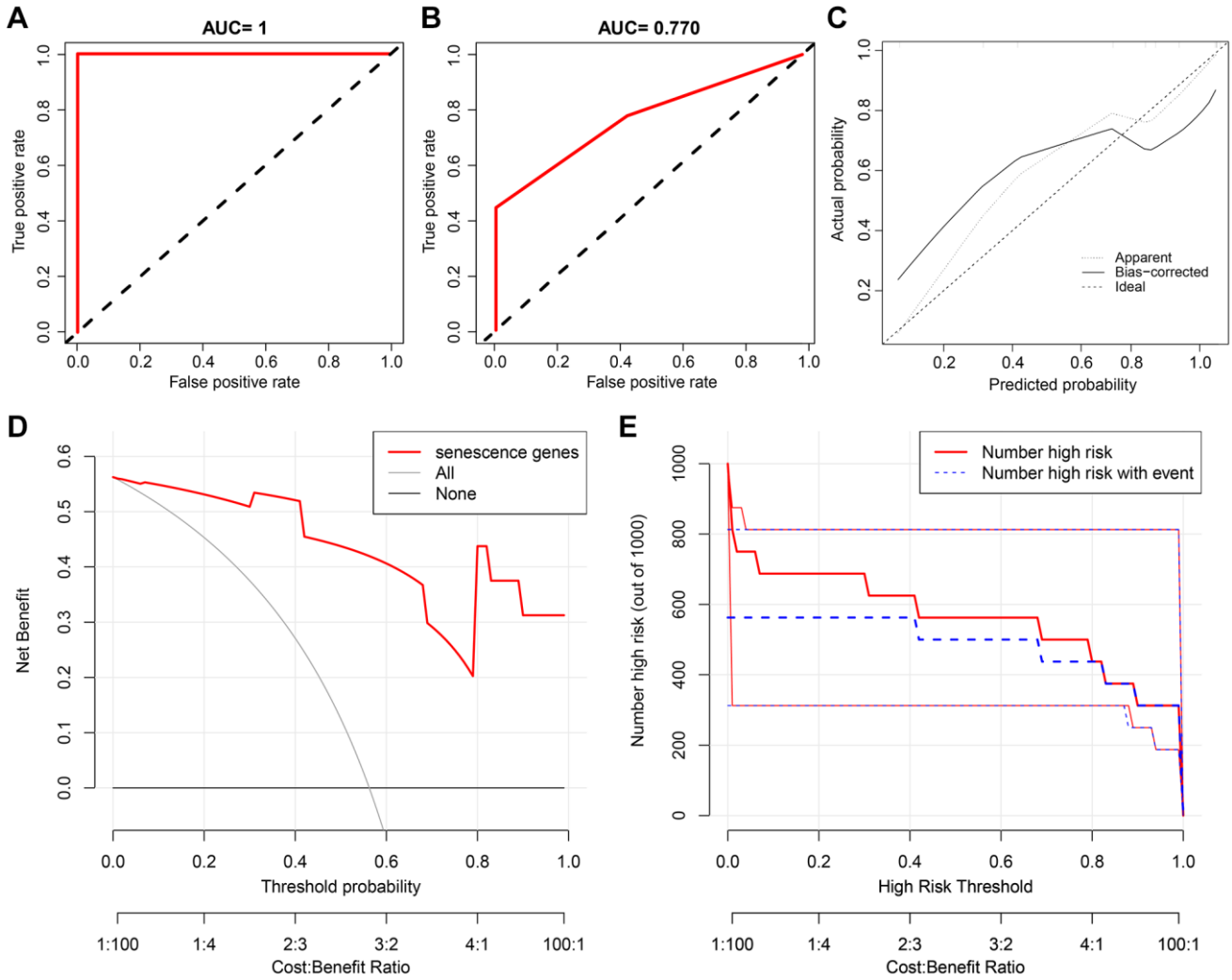
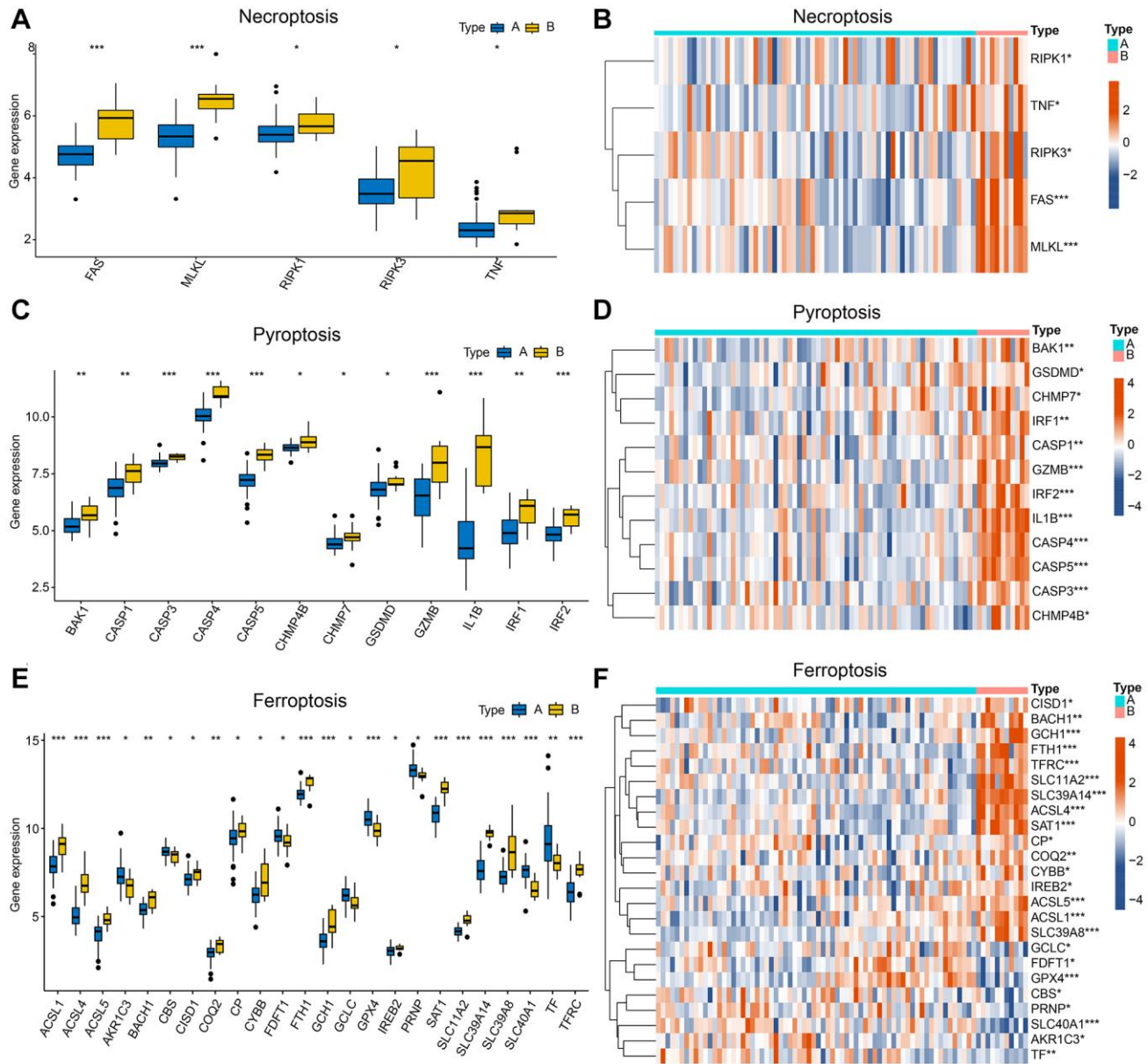


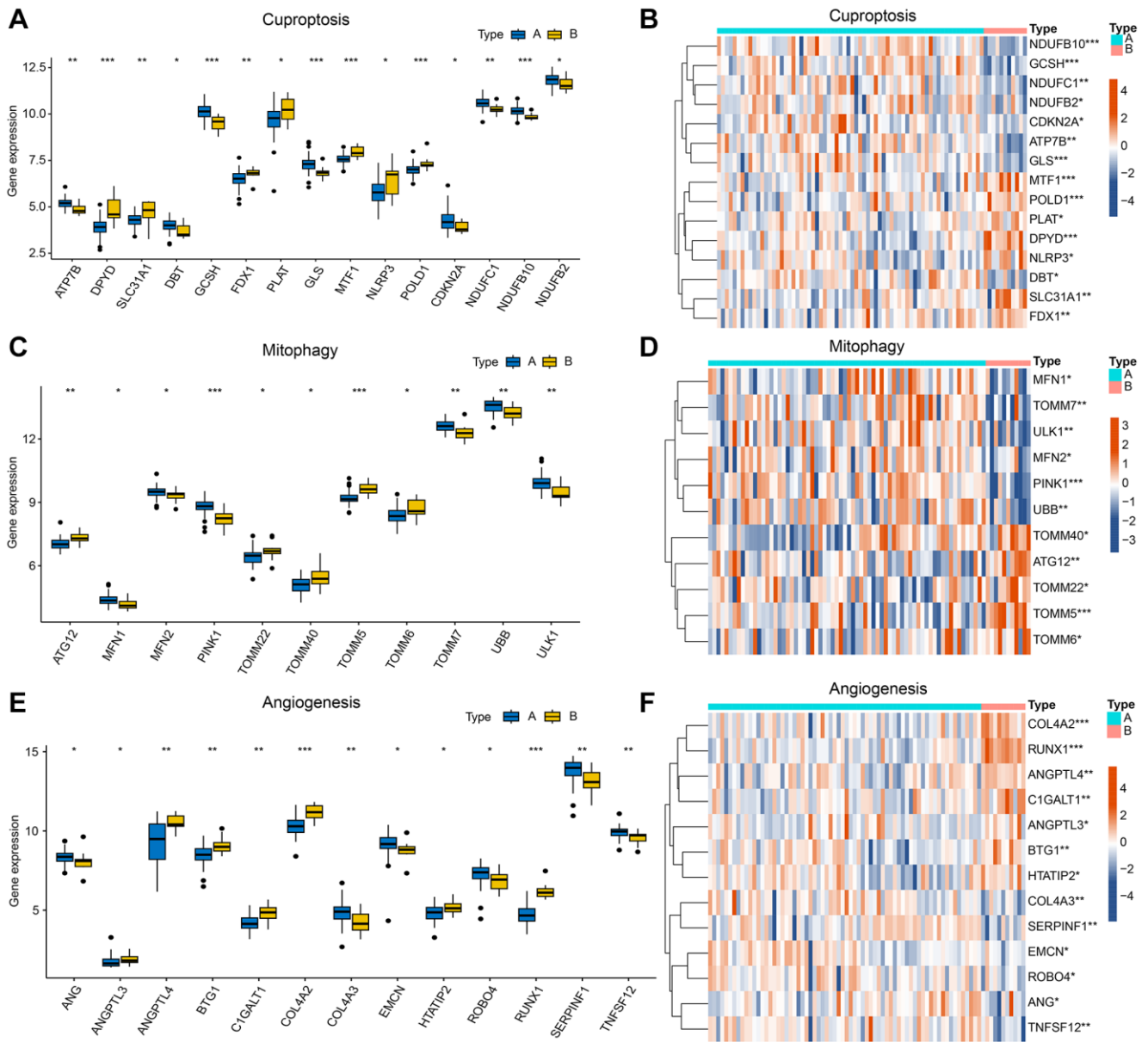
SUPPLEMENTARY FIGURES



Supplementary Figure 1. The external validation of the diagnostic model. (A) The receiver operating characteristic curve (ROC) for the training set, AUC = 1. **(B)** The ROC for the validation set, AUC = 0.770. **(C)** Calibration curve of the validation set. **(D)** Decision curve analysis of the validation set. **(E)** Clinical impact curve of the validation set.



Supplementary Figure 2. Differential expression of subtypes A and B on multiple programmed death pathways. (A) Box plot of differential expression of A and B subtypes in Necroptosis. (B) Heatmap of differential expression of A and B subtypes in Necroptosis. (C) Box plot of differential expression of A and B subtypes in Pyroptosis. (D) Heatmap of differential expression of A and B subtypes in Pyroptosis. (E) Box plot of differential expression of A and B subtypes in Ferroptosis. (F) Heatmap of differential expression of A and B subtypes in Ferroptosis. (* $P < 0.05$; ** $P < 0.01$; *** $P < 0.001$).



Supplementary Figure 3. Differential expression of subtypes A and B on multiple programmed death pathways and angiogenesis. (A) Box plot of differential expression of A and B subtypes in Cuproptosis. (B) Heatmap of differential expression of A and B subtypes in Cuproptosis. (C) Box plot of differential expression of A and B subtypes in Mitophagy. (D) Heatmap of differential expression of A and B subtypes in Mitophagy. (E) Box plot of differential expression of A and B subtypes in Angiogenesis. (F) Heatmap of differential expression of A and B subtypes in Angiogenesis. (* $P < 0.05$; ** $P < 0.01$; *** $P < 0.001$).