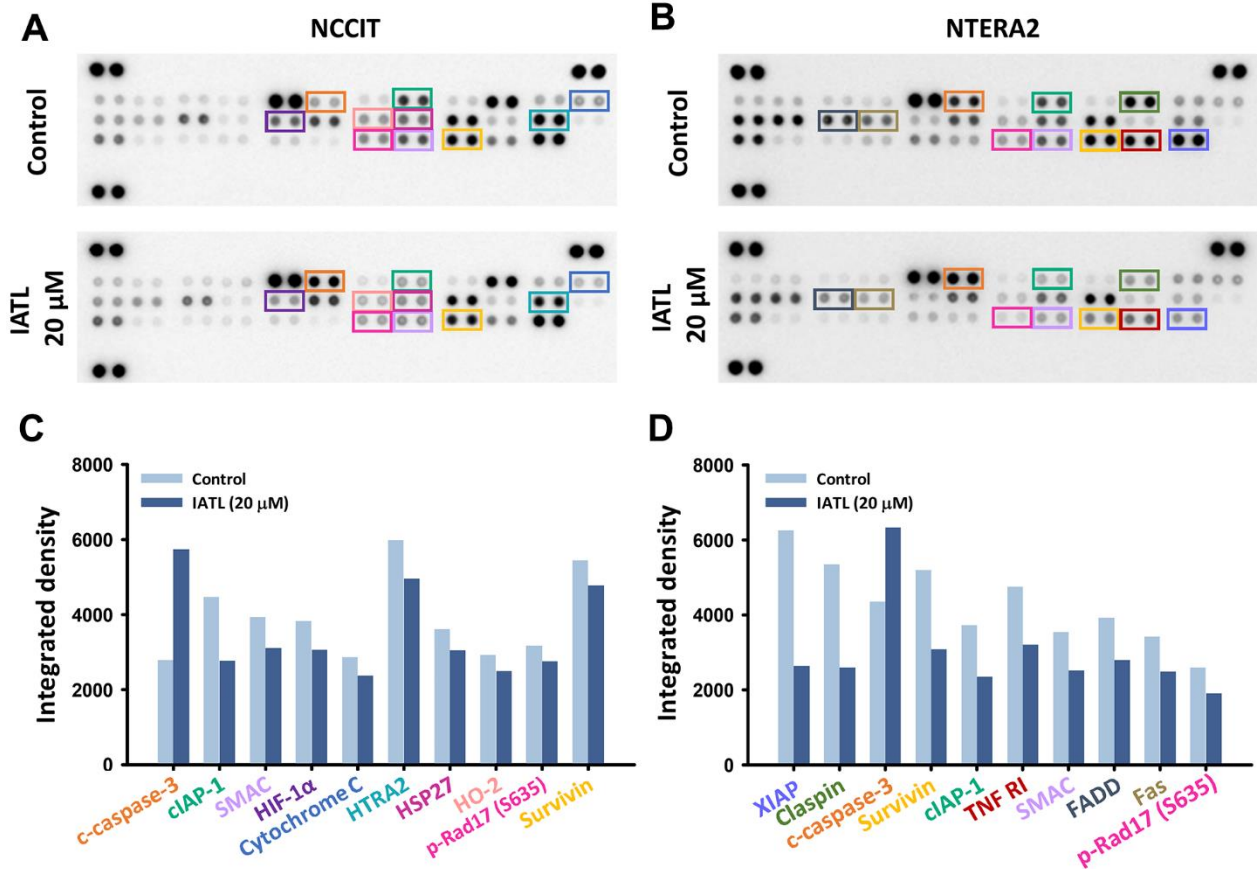


SUPPLEMENTARY FIGURE



Supplementary Figure 1. We used the Human Apoptosis Array to analyze testicular cancer cell death caused by IATL. (A) NCCIT and (C) NTERA2 were examined for the expression of apoptosis-related proteins. As demonstrated in (B, D), the integrated density of proteins is quantified into bar charts; the proteins that presented obvious changes after IATL treatment gave us clues to determine the IATL-related apoptosis pathways.